

WHOLESALE PRICE LIST
1ST MAY 2011

SUPPLIERS OF:
DOOR STOPS / FLUSH BOLTS / LOCKS
DOOR GUIDES
DOOR TRACKS - FACE OF WALL & OVERHEAD
ROBE TRACKS
BI-FOLD & MULTI-FOLD ROOM DIVIDERS
CUPBOARD TRACK & GLASS TRACK
DOOR WHEELS & DOOR RAILS
CARPET EDGINGS
FLYSCREEN SECTION - COMPONENTS

ACTIVE HARDWARE PRODUCTS
FACTORY 4/266 OSBORNE AVE
CLAYTON SOUTH VIC 3169
Ph: (03) 9558 2555 Fax (03) 9558 7111
Mob. 0415 376 849
e. ActiveHardware@netspace.net.au
w. www.activehardware.com.au

Active
HardwareProducts



Categories

Door Stops / Flush Bolts / Locks	P4-5
Door Guides / Door Tracks	P6-10
Robe Tracks	P11-15
Bi-Fold & Multi-Fold Room Dividers	P16-20
Cupboard Track & Glass Track	P21
Door Wheels & Door Rails	P22-26
Carpet Edgings	P27
Flyscreen Section - Components	P28-29
Fixing Information	P30-38
Conditions	P39

Index

Door Stops - PVC & Metal		4
Flush Bolts / Flush Pulls / Cavity Locks / Bi-fold Pulls		4-5
Door Guides		6
Classic Four-Ball Sliding Door Track	50kg	7
Economy Sliding Door Track	30kg	8
Utility Sliding Door Track	50kg	8
Husky Sliding Door Track	75kg	9
120kg Single Run Door Track	120kg	9
Industrial Sliding Door Track	100kg / 200kg	10
Wardrobe Sliding Door Track	25kg	11
Robesaver Sliding Door Track	50kg	12-14
Oval Tube for Wardrobes		15
Johnson Bi-fold Door Track	14kg	16
Acme Bi-fold Door Track	12kg	17
Johnson 25 Series Multi-fold Door Track	25kg	18
Aluminium Channels & Bi-fold Hinges		19
25kg Light Accordion Door Track	25kg	20
75kg Pivotfold Door Track	75kg	20
Cupboard Sliding Door Track	15kg	21
Sliding Glass Track		21
Brass & Aluminium Sliding Door Rail	100kg	22
Sliding Door Wheels		23-26
Carpet Trim / Stair Tread		27
Flyscreen Section & Components		28-29
Fixing information		30-37
Weatherfold for Exterior Folding Doors	45kg / 75kg	38
Conditions		39



CUSHION DOOR STOPS (PLASTIC)

Part No.	Description	Barcode 9323517+	Qty Pack	Cost
75PW	75mm White	751007	50	P.O.A.
75PBR	75mm Brown	752004	50	P.O.A.
75PAI	75mm Almond Ivory	753001	50	P.O.A.
75PP	75mm Primrose	757009	50	P.O.A.
75PG	75mm Grey	754008	50	P.O.A.
75PBL	75mm Black	756002	50	P.O.A.

• PRE PACK (75MM ROUND)



CUSHION DOOR STOPS

Part No.	Description	Barcode 9323517+	Qty Pack	Cost
75LW	75mm White	751106	50	P.O.A.
75LBR	75mm Brown	752103	50	P.O.A.
75LAI	75mm Almond Ivory	753100	50	P.O.A.
75LP	75mm Primrose	757108	50	P.O.A.
75LG	75mm Grey	754107	50	P.O.A.
75LBL	75mm Black	756101	50	P.O.A.

• LOOSE (75MM ROUND)



CUSHION DOOR STOPS

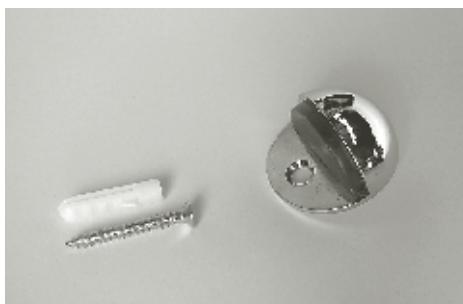
Part No.	Description	Barcode 9323517+	Qty Pack	Cost
75BW	75mm White	751205	400	P.O.A.
75BBR	75mm Brown	752202	400	P.O.A.
75BAI	75mm Almond Ivory	753209	400	P.O.A.
75BP	75mm Primrose	757205	400	P.O.A.
75BG	75mm Grey	754206	400	P.O.A.
75BBL	75mm Black	756200	400	P.O.A.

• BULK 400 PER CARTON (75MM ROUND)



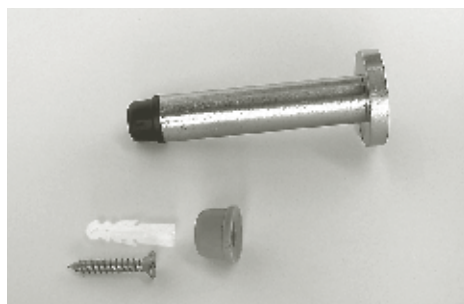
VICTORIAN DOOR STOP (METAL) 75MM

Part No.	Description	Barcode 9323517+	Qty Pack	Cost
317BL	Polished / Loose	317029	10	P.O.A.
317BP	Brass / Pre Pack	317005	10	P.O.A.
317CL	Chrome / Loose	317036	10	P.O.A.
317CP	Plated / Pre Pack	317043	10	P.O.A.
317SCL	Satin / Loose	317050	10	P.O.A.
317SCP	Chrome / Pre Pack	317012	10	P.O.A.



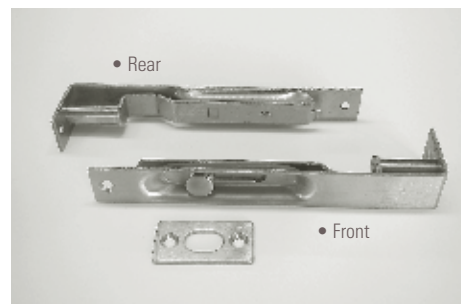
1/2 ROUND DOOR STOP (METAL)

Part No.	Description	Barcode 9323517+	Qty Pack	Cost
316BL	Polished / Loose	316022	10	P.O.A.
316BP	Brass / Pre Pack	316008	10	P.O.A.
316CL	Chrome / Loose	316121	10	P.O.A.
316CP	Plated / Pre Pack	316107	10	P.O.A.
316SCL	Satin / Loose	316138	10	P.O.A.
316SCP	Chrome / Pre Pack	316114	10	P.O.A.



80MM POLE DOOR STOP (METAL)

Part No.	Description	Barcode 9323517+	Qty Pack	Cost
PDS2BL	Polished / Loose	166641	10	P.O.A.
PDS2BP	Brass / Pre Pack	166740	10	P.O.A.
PDS2CL	Chrome / Loose	166658	10	P.O.A.
PDS2CP	Plated / Pre Pack	166757	10	P.O.A.
PDS2SCL	Satin / Loose	166665	10	P.O.A.
PDS2SCP	Chrome / Pre Pack	166764	10	P.O.A.



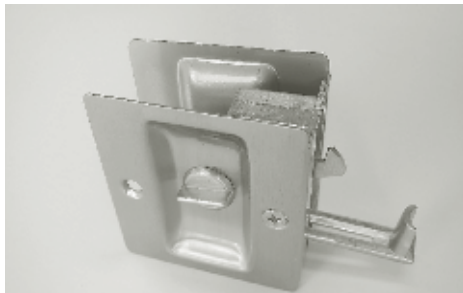
FLUSH BOLTS (150MM X 22MM)

Part No.	Description	Barcode 9323517+	Qty Pack	Cost
605BL	Polished Brass / Loose	601029	10	P.O.A.
605BP	Polished Brass / Pre Pk	601005	10	P.O.A.
605CL	Chrome Plated / Loose	605027	10	P.O.A.
605CP	Chrome Plated / Pre Pk	605003	10	P.O.A.
605SCL	Satin Chrome Plated / Loose	605041	10	P.O.A.
605SCP	Satin Chrome Plated / Pre Pk	605010	10	P.O.A.



SECURITY DOOR BOLT

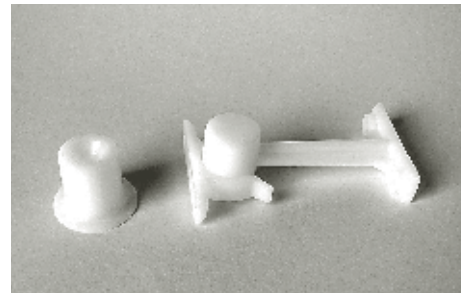
Part No.	Description	Barcode 9323517+	Qty Pack	Cost
SDB1BL	Polished / Loose	166702	10	P.O.A.
SDB1BP	Brass / Pre Pack	166801	10	P.O.A.
SDB1CL	Chrome / Loose	166818	10	P.O.A.
SDB1CP	Plated / Pre Pack	166917	10	P.O.A.



CAVITY DOOR LOCK (PRIVACY)

Part No.	Description	Barcode 9323517+	Qty Pack	Cost
CDLBL	Polished / Loose	166610	5	P.O.A.
CDLBP	Brass / Pre Pack	166719	5	P.O.A.
CDLCL	Chrome / Loose	166627	5	P.O.A.
CDLCP	Plated / Pre Pack	166726	5	P.O.A.
CDLSCL	Satin Chrome / Loose	166634	5	P.O.A.
CDLSCP	Plated / Pre Pack	166733	5	P.O.A.

• 63 X 35 X 70MM



PLASTIC DOOR HOLDER

Part No.	Description	Barcode 9323517+	Qty Pack	Cost
817P	Pre Pack	807001	10	P.O.A.

• (FLOOR OR WALL MOUNTED)



SOLID BRASS FLUSH PULL (133 X 33MM)

Part No.	Description	Barcode 9323517+	Qty Pack	Cost
286L	Polished Brass / Loose	286028	10	P.O.A.
286P	Polished Brass / P/Px2	286004	10	P.O.A.



ROUND EDGE FLUSH PULLS (DIECAST)

Part No.	Description	Barcode 9323517+	Qty Pack	Cost
287BL	Brass / Loose	287216	10	P.O.A.
287BP	Brass / Pre Pack x 2	287117	10	P.O.A.
287CL	Chrome / Loose	287223	10	P.O.A.
287CP	Chrome / Pre Pack x 2	287124	10	P.O.A.
287SCL	Satin Chrome / Loose	287230	10	P.O.A.
287SCP	S/Chrome / Pre Pack x 2	287131	10	P.O.A.

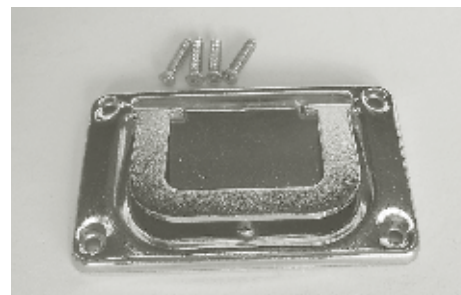
• 113 X 33MM



SQUARE EDGE FLUSH PULLS (DIECAST)

Part No.	Description	Barcode 9323517+	Qty Pack	Cost
288BL	Brass / Loose	287414	10	P.O.A.
288BP	Brass / Pre Pack x 2	287421	10	P.O.A.
288CL	Chrome / Loose	287438	10	P.O.A.
288CP	Chrome / Pre Pack x 2	287445	10	P.O.A.
288SCL	Satin Chrome / Loose	287452	10	P.O.A.
288SCP	S/Chrome / Pre Pack x 2	287469	10	P.O.A.

• 113 X 33MM



PRESSED STEEL 65 x 3 x 40mm 'D' PULLS

Part No.	Description	Barcode 9323517+	Qty Pack	Cost
2900BL	Brass / Loose	290117	10	P.O.A.
2900BP	Brass / Pre Pack	290018	10	P.O.A.
2900BL	Chrome / Loose	290124	10	P.O.A.
2900BP	Chrome / Pre Pack	290025	10	P.O.A.



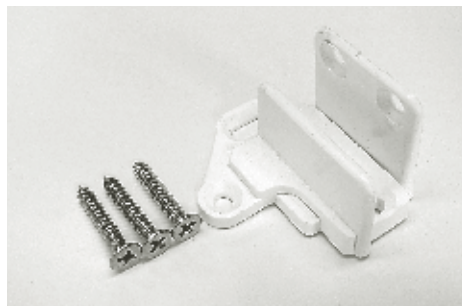
DIECAST 50MM RING PULLS

Part No.	Description	Barcode 9323517+	Qty Pack	Cost
2900RBL	Brass / Loose	296010	10	P.O.A.
2900RBP	Brass / Pre Pack	296027	10	P.O.A.
2900RCL	Chrome / Loose	296034	10	P.O.A.
2900RCP	Chrome / Pre Pack	296041	10	P.O.A.
2900RSCL	Satin Chrome / Loose	296058	10	P.O.A.
2900RSCP	Satin Chrome / Pre Pack	296065	10	P.O.A.



PLASTIC DOOR GUIDE

Part No.	Description	Barcode 9323517+	Qty Pack	Cost
290L	Loose	291008	10	P.O.A.
290P	Pre Pack	290001	10	P.O.A.



PLASTIC FLOOR / SKIRTING GUIDE

Part No.	Description	Barcode 9323517+	Qty Pack	Cost
300P	Pre Pack	300007	10	P.O.A.



ALUMINIUM 75MM FELT GUIDE

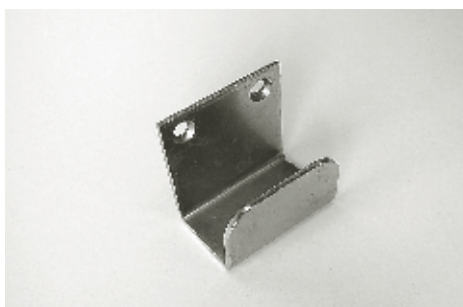
Part No.	Description	Barcode 9323517+	Qty Pack	Cost
310P	Pre Pack	310006	10	P.O.A.

• FOR NON-GROOVED DOORS



2-PIECE ADJUSTABLE GUIDE (METAL)

Part No.	Description	Barcode 9323517+	Qty Pack	Cost
320L	Loose / Zinc	321606	10	P.O.A.
320P	Pre Pack / Zinc	320005	10	P.O.A.



NON ADJUSTABLE GUIDE (METAL)

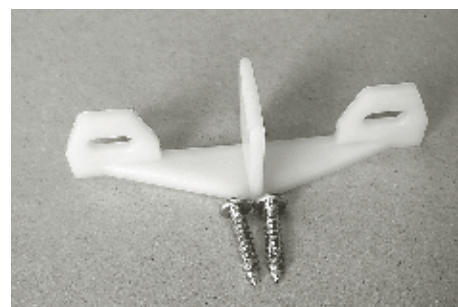
Part No.	Description	Barcode 9323517+	Qty Pack	Cost
321L	Loose / Zinc	321507	10	P.O.A.
321P	Pre Pack / Zinc	321002	10	P.O.A.



LH / RH CAVITY GUIDE

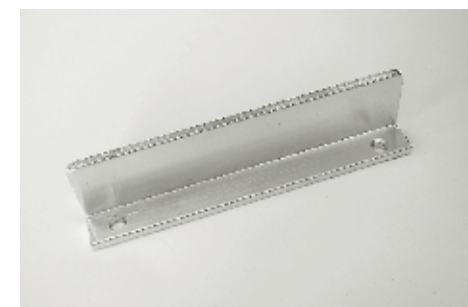
Part No.	Description	Barcode 9323517+	Qty Pack	Cost
340L	Loose	340102	20	P.O.A.
340P	Pre Pack	340003	10	P.O.A.

• FOR NON-GROOVED DOORS



PLASTIC CAVITY DOOR GUIDE

Part No.	Description	Barcode 9323517+	Qty Pack	Cost
370L	Loose	371106	10	P.O.A.
370P	Pre Pack	370000	10	P.O.A.



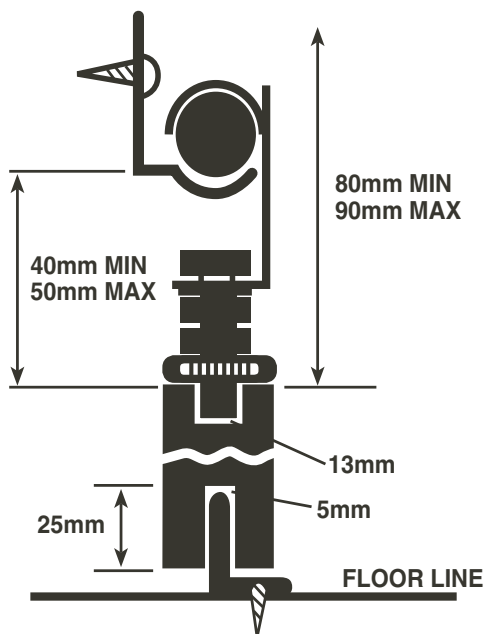
100MM ALUMINIUM DOOR GUIDE

Part No.	Description	Barcode 9323517+	Qty Pack	Cost
400L	Loose	400820	10	P.O.A.
400P	Pre Pack	400813	10	P.O.A.

Face of Wall Fixing / 50KG Classic '4-Ball' Aluminium Sliding Door Track

7

• FOR FIXING INFORMATION REFER TO PAGE 30



CLASSIC 4-BALL SLIDING TRACK

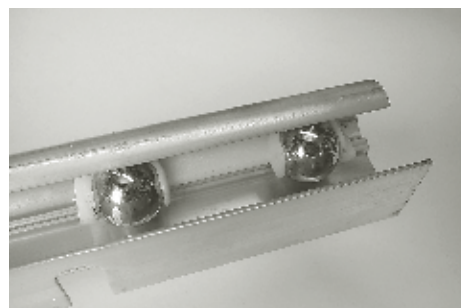
Part No.	Description	Barcode 9323517+	Qty Pack	Cost
----------	-------------	---------------------	-------------	------

• TO SUIT SINGLE DOOR WIDTH

620	620mm to 740mm	000853	1	P.O.A.
760	720mm to 870mm	000860	10	P.O.A.
890	890mm to 990mm	000877	1	P.O.A.
1010	1010mm to 1120mm	000884	1	P.O.A.
1140	1140mm to 1245mm	000891	1	P.O.A.
1270	1270mm to 1370mm	000907	1	P.O.A.

• TO SUIT DOUBLE DOOR WIDTH

680/2	680mm to 740mm	000914	1	P.O.A.
760/2	760mm to 870mm	000921	1	P.O.A.



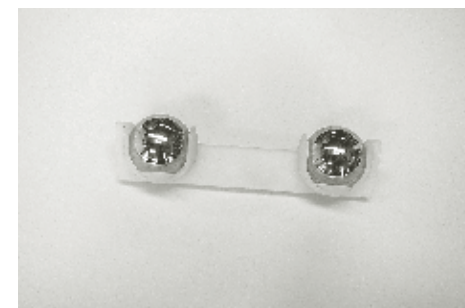
704 MM CARRIAGE C/W BALLS

Part No.	Description	Barcode 9323517+	Qty Pack	Cost
704	704mm Carriage c/w Balls	704003	1	P.O.A.



TRACK STOP

Part No.	Description	Barcode 9323517+	Qty Pack	Cost
70L	Loose	700012	10	P.O.A.
70P	Pre Pack	700005	10	P.O.A.



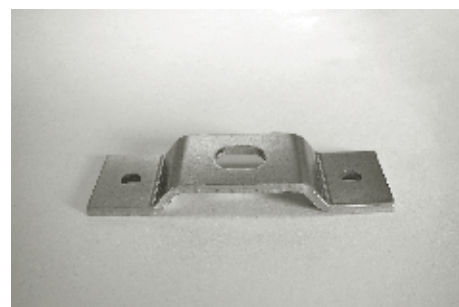
BALL HOLDER C/W BALLS

Part No.	Description	Barcode 9323517+	Qty Pack	Cost
74L	Loose	740018	10	P.O.A.
74P	Pre Pack	740001	10	P.O.A.



SET OF DOOR FITTINGS

Part No.	Description	Barcode 9323517+	Qty Pack	Cost
76P	Pack includes: • 2 Hanger Plates, 2 Bolts, 2 Adjustable Nuts, 4 Lock Nuts, 2 Washers, 1 Grease Pack, Floor Guide & Screws	760009	10	P.O.A.



HANGER PLATE

Part No.	Description	Barcode 9323517+	Qty Pack	Cost
77L	Loose	771005	10	P.O.A.
77P	Pre Pack	772002	10	P.O.A.

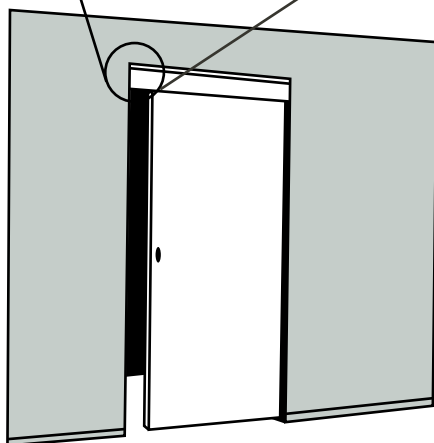
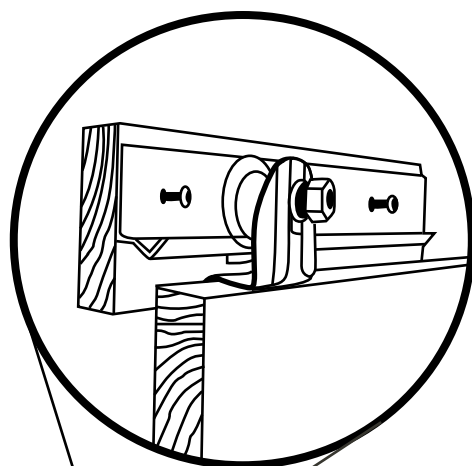


GREASE PACK

Part No.	Description	Barcode 9323517+	Qty Pack	Cost
78L	Loose	781004	10	P.O.A.
78P	Pre Pack	782001	10	P.O.A.

Active
HardwareProducts

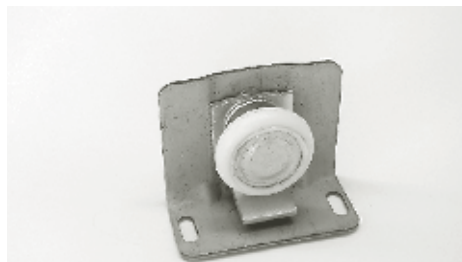
• FOR FIXING INFORMATION REFER TO PAGE 30



ECONOMY SLIDING DOOR TRACK

Part No.	Description	Barcode 9323517+	Qty Pack	Cost
250B	600-920 Door Width	251002	10	P.O.A.
250C	920-1200 Door Width	252108	10	P.O.A.

• INCLUDES BALL BEARING WHEELS



ECONOMY TROLLEY

Part No.	Description	Barcode 9323517+	Qty Pack	Cost
260L	Loose	260011	10	P.O.A.
260P	Pre Pack	260004	10	P.O.A.



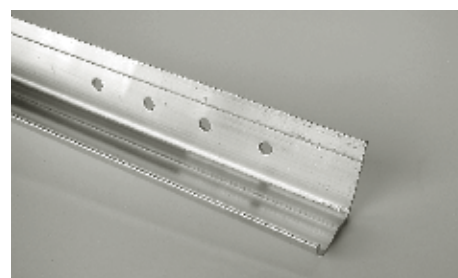
ECONOMY TRACK STOP

Part No.	Description	Barcode 9323517+	Qty Pack	Cost
280L	Loose	280019	10	P.O.A.
280P	Pre Pack	280002	10	P.O.A.



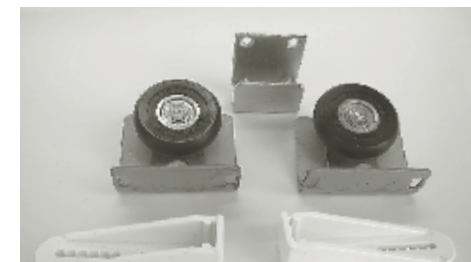
29MM BALL BEARING WHEEL

Part No.	Description	Barcode 9323517+	Qty Pack	Cost
270L	Loose	270010	10	P.O.A.
270P	Pre Pack	270003	10	P.O.A.



50KG UTILITY / 4 BALL TRACK

Part No.	Description	Barcode 9323517+	Qty Pack	Cost
UT16	1600mm	412212	1	P.O.A.
UT18	1855mm	412229	1	P.O.A.
UT21	2110mm	412236	1	P.O.A.
UT32	3225mm	412243	1	P.O.A.



50KG UTILITY DOOR FITTINGS

Part No.	Description	Barcode 9323517+	Qty Pack	Cost
UT50P	Set of fittings	412205	1	P.O.A.

• INCLUDES BALL BEARING WHEELS

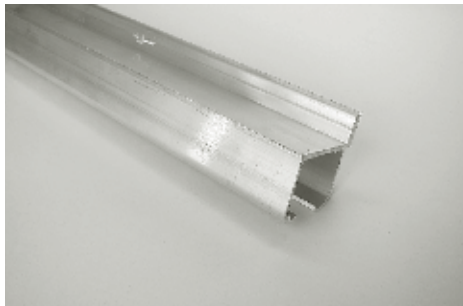


120KG SINGLE RUN 41 X 31MM

Part No.	Description	Barcode 9323517+	Qty Pack	Cost
12020	2000mm Length	120209	1	P.O.A.
12030	3000mm Length	120308	1	P.O.A.
12040	4000mm Length	120407	1	P.O.A.
12060	6000mm Length	120605	1	P.O.A.

75kg Husky / 120kg Single Run Aluminium Door Track 9

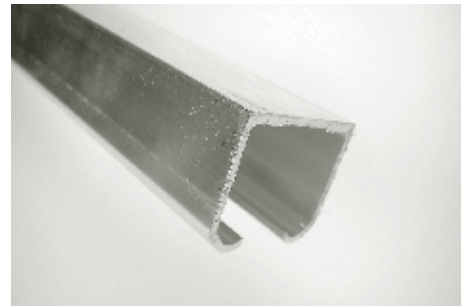
• FOR FIXING INFORMATION REFER TO PAGE 31 & 32



75KG FACE FIX HUSKY 35 X 43mm

Part No.	Description	Barcode 9323517+	Qty Pack	Cost
2518FF	1800mm Length	254188	1	P.O.A.
2525FF	2500mm Length	254256	1	P.O.A.
2533FF	3300mm Length	254331	1	P.O.A.
2551FF	5100mm Length	254515	1	P.O.A.
2518FFP	1800mm / Pre Pack Set	254195	1	P.O.A.
2525FFP	2500mm / Pre Pack Set	254263	1	P.O.A.
2533FFP	3300mm / Pre Pack Set	253327	1	P.O.A.

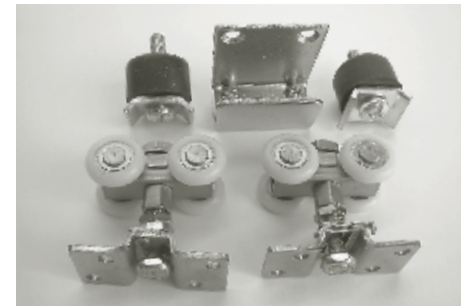
• PRE PACK SETS C/W S/STEEL ASSEMBLY



75KG TOP FIX HUSKY 32 X 30mm

Part No.	Description	Barcode 9323517+	Qty Pack	Cost
2518	1800mm Length	251811	1	P.O.A.
2525	2500mm Length	252511	1	P.O.A.
2533	3300mm Length	253310	1	P.O.A.
2551	5100mm Length	255116	1	P.O.A.
2518TFP	1800mm / Pre Pack Set	251835	1	P.O.A.
2525TFP	2500mm / Pre Pack Set	252535	1	P.O.A.
2533TFP	3300mm / Pre Pack Set	253341	1	P.O.A.

• PRE PACK SETS C/W S/STEEL ASSEMBLY



75KG HUSKY FITTINGS

Part No.	Description	Barcode 9323517+	Qty Pack	Cost
284HP	Stainless Steel	252849	1	P.O.A.

• S/STEEL ASSEMBLY - C/W BALL BEARING WHEELS



50KG HUSKY FITTINGS

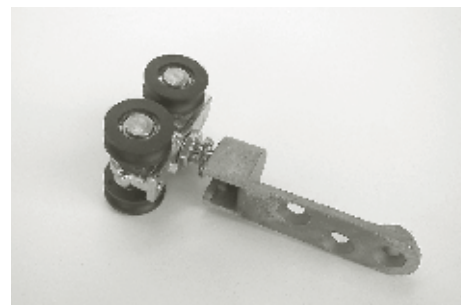
Part No.	Description	Barcode 9323517+	Qty Pack	Cost
282HP	Nylon Assembly	282662	1	P.O.A.

• NYLON ASSEMBLY - C/W BALL BEARING WHEELS



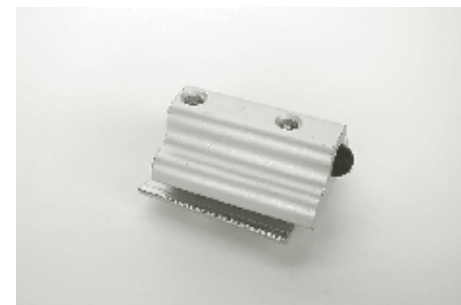
120KG TOP FIX HANGER

Part No.	Description	Barcode 9323517+	Qty Pack	Cost
57EN	4-wheel	120575	1	P.O.A.



120KG FACE FIX HANGER

Part No.	Description	Barcode 9323517+	Qty Pack	Cost
50EN	4-wheel	120506	1	P.O.A.



SINGLE RUN TRACK STOP

Part No.	Description	Barcode 9323517+	Qty Pack	Cost
120DS	Track Stop	120124	1	P.O.A.

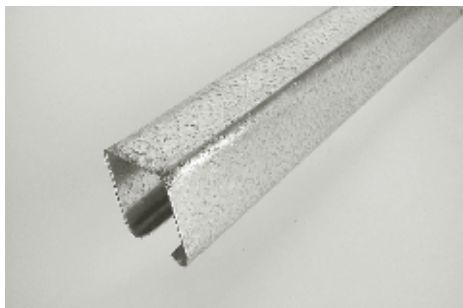


SINGLE RUN FACE FIX BRACKET

Part No.	Description	Barcode 9323517+	Qty Pack	Cost
ISS250	Face Fix Bracket	120254	1	P.O.A.

• FOR DOOR GUIDES REFER TO PAGE 6

10 100 kg - 200 kg Industrial Track



GALVANISED STEEL TRACK 45mm x 35mm

Part No.	Description	Barcode 9323517+	Qty Pack	Cost
ED224	2400mm length	436614	1	P.O.A.
ED230	3000mm length	436621	1	P.O.A.
ED236	3600mm length	436638	1	P.O.A.
ED248	4300mm length	436645	1	P.O.A.
ED261	6100mm length	436683	1	P.O.A.



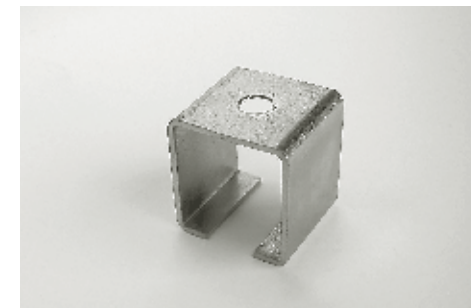
100 KG 2 WHEEL HANGER

Part No.	Description	Barcode 9323517+	Qty Pack	Cost
ED7	100kg Weight Capacity	436652	1	P.O.A.



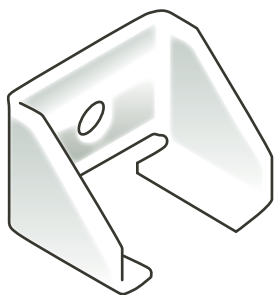
200 KG 4 WHEEL HANGER

Part No.	Description	Barcode 9323517+	Qty Pack	Cost
ED14LP	200kg Weight Capacity	436669	1	P.O.A.



TOP FIX BRACKET

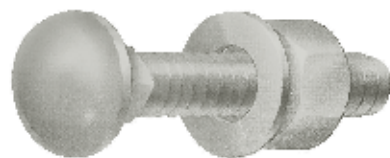
Part No.	Description	Barcode 9323517+	Qty Pack	Cost
ED19	Bolt On Bracket	436676	1	P.O.A.



ADAPTOR FACE FIX BRACKET

Part No.	Description	Barcode 9323517+	Qty Pack	Cost
ED120	Use with ED19	431206	1	P.O.A.

• USE WITH ED 19



BOLT SET

Part No.	Description	Barcode 9323517+	Qty Pack	Cost
ED19BS	Use with ED19	436706	1	P.O.A.

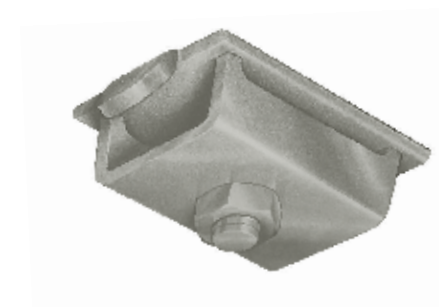
• USE WITH ED 19



TOP PLATE & ADJUSTABLE NUT

Part No.	Description	Barcode 9323517+	Qty Pack	Cost
ED37	Use with Trolleys	436713	1	P.O.A.

• USE WITH TROLLEYS

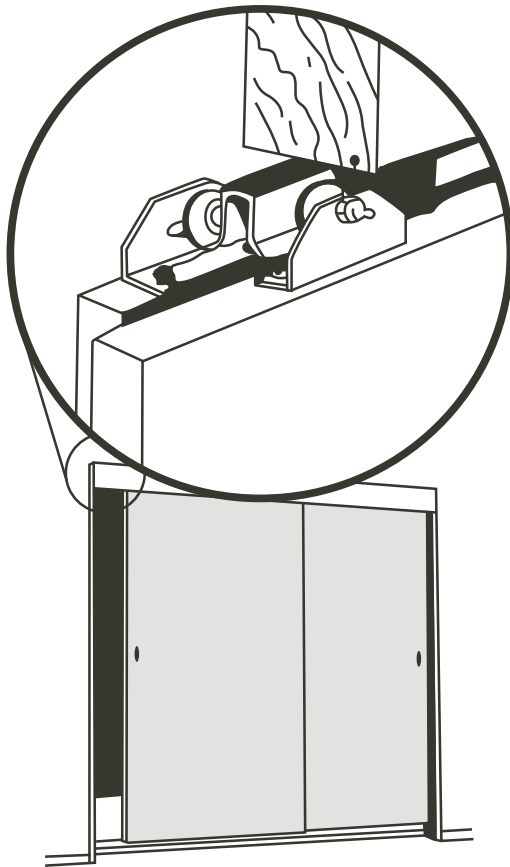


TRACK STOP

Part No.	Description	Barcode 9323517+	Qty Pack	Cost
EC40	Track Stop	436720	1	P.O.A.

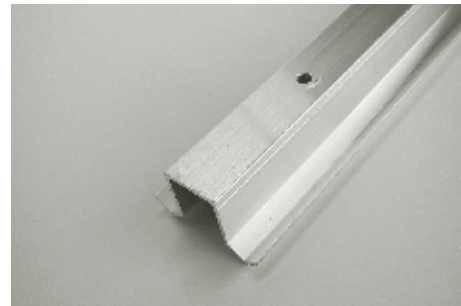
25kg Double / Single Aluminium Robetrack 11

• FOR FIXING INFORMATION REFER TO PAGE 32



ROBETRACK PRE PACK SETS

Part No.	Description	Barcode 9323517+	Qty Pack	Cost
DRP12	1200mm (x 2 doors)	120001	5	P.O.A.
DRP15	1500mm (x 2 doors)	150008	5	P.O.A.
DRP18	1800mm (x 2 doors)	180005	5	P.O.A.
DRP21	2100mm (x 2 doors)	210009	5	P.O.A.
DRP24	2400mm (x 3 doors)	240006	5	P.O.A.



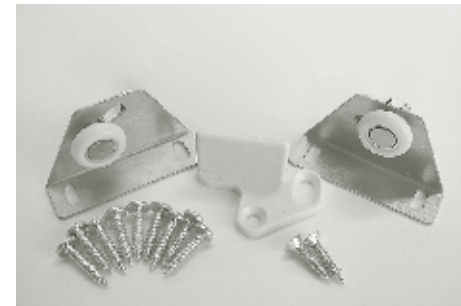
DOUBLE ROBETRACK 40 x 25MM

Part No.	Description	Barcode 9323517+	Qty Pack	Cost
DRL12	1200mm length	122005	10	P.O.A.
DRL15	1500mm length	152002	10	P.O.A.
DRL18	1800mm length	182009	10	P.O.A.
DRL21	2100mm length	212003	10	P.O.A.
DRL24	2400mm length	242000	10	P.O.A.
DRL27	2700mm length	272007	10	P.O.A.
DRL30	3000mm length	302001	10	P.O.A.
DRL36	3600mm length	362005	10	P.O.A.
DRL50	4880mm length	502005	10	P.O.A.



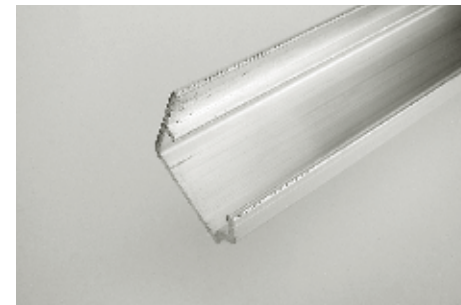
20MM BALL BEARING WHEEL

Part No.	Description	Barcode 9323517+	Qty Pack	Cost
320WL	Loose	322016	10	P.O.A.
320WP	Pre Pack	322009	10	P.O.A.



ROBE FITTINGS

Part No.	Description	Barcode 9323517+	Qty Pack	Cost
330P	Pre Pack	330042	10	P.O.A.



SINGLE ROBETRACK 25 x 27MM

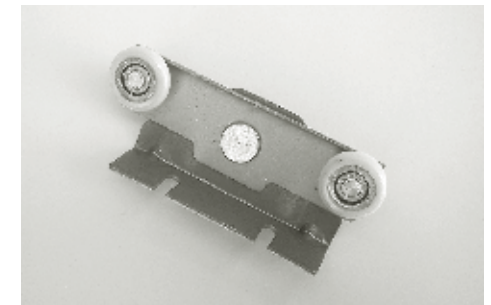
Part No.	Description	Barcode 9323517+	Qty Pack	Cost
SR17	1750mm Length	333319	10	P.O.A.
SR35	3500mm Length	333326	10	P.O.A.



SIDE FIX BRACKET

Part No.	Description	Barcode 9323517+	Qty Pack	Cost
330AP	Pre Pack	331001	10	P.O.A.

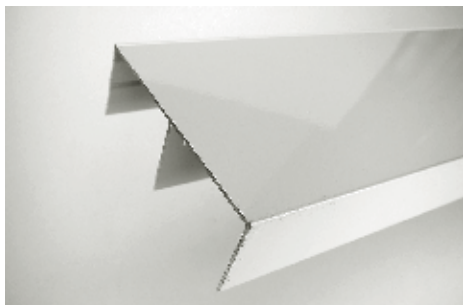
• INCLUDES NUTS, BOLTS & SCREWS



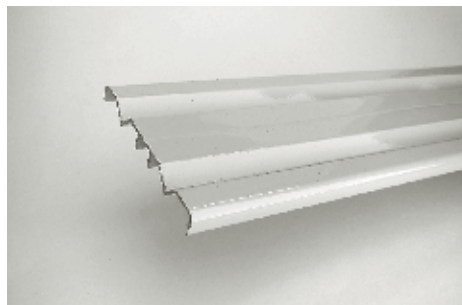
20MM WHEELS TANDEM TROLLEY

Part No.	Description	Barcode 9323517+	Qty Pack	Cost
192L	Loose	192015	10	P.O.A.
192P	Pre Pack	192008	10	P.O.A.

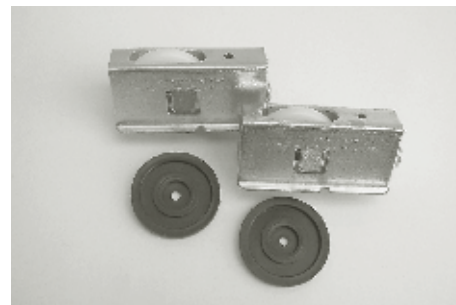
• FOR FIXING INFORMATION REFER TO PAGE 33

**TOP TRACK 86 x 32 x 40MM GAP**

Part No.	Description	Barcode 9323517+	Qty Pack	Cost
RST16	1620mm Length	421641	5	P.O.A.
RST24	2440mm Length	422440	5	P.O.A.
RST32	3260mm Length	423249	5	P.O.A.
RST48	4880mm Length	424840	5	P.O.A.

**BOTTOM TRACK 86 x 9MM**

Part No.	Description	Barcode 9323517+	Qty Pack	Cost
RSB16	1620mm Length	421658	5	P.O.A.
RSB24	2440mm Length	422457	5	P.O.A.
RSB32	3260mm Length	423256	5	P.O.A.
RSB48	4880mm Length	424857	5	P.O.A.

**50 KG SET OF FITTINGS**

Part No.	Description	Barcode 9323517+	Qty Pack	Cost
RS42P	Pre Pack	421009	10	P.O.A.

**DOOR WHEEL METAL HOUSING**

Part No.	Description	Barcode 9323517+	Qty Pack	Cost
RS41L	Loose	421108	10	P.O.A.
RS41P	Pre Pack	421122	10	P.O.A.

**DOOR WHEEL NYLON HOUSING**

Part No.	Description	Barcode 9323517+	Qty Pack	Cost
RS40L	Loose	400615	10	P.O.A.
RS40P	Pre Pack	400622	10	P.O.A.

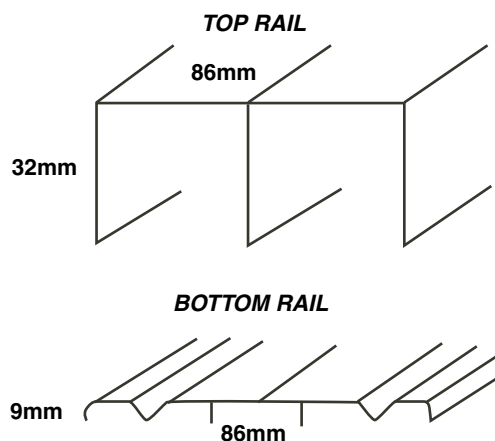
**40MM TOP GUIDE**

Part No.	Description	Barcode 9323517+	Qty Pack	Cost
RSGL	Loose	421115	10	P.O.A.
RSGLP	Pre Pack	422600	10	P.O.A.

**REAR MOUNT DOOR WHEEL**

Part No.	Description	Barcode 9323517+	Qty Pack	Cost
RM41L	Loose	421207	10	P.O.A.
RM41P	Pre Pack	421214	10	P.O.A.

Pre Pack Sets to suit doors up to 820mm



1620MM 2-DOOR UNIT TOP & BOTTOM TRACK WHEELS & GUIDES (PRE PACK)

Part No.	Description	Barcode 9323517+	Qty Pack	Cost
RSTB16W	White	421610	1	P.O.A.
RSTB16AI	Almond Ivory	421627	1	P.O.A.
RSTB16P	Primrose	421634	1	P.O.A.
RSTB16G	Gold Anodised	424611	1	P.O.A.
RSTB16S	Silver Anodised	425618	1	P.O.A.

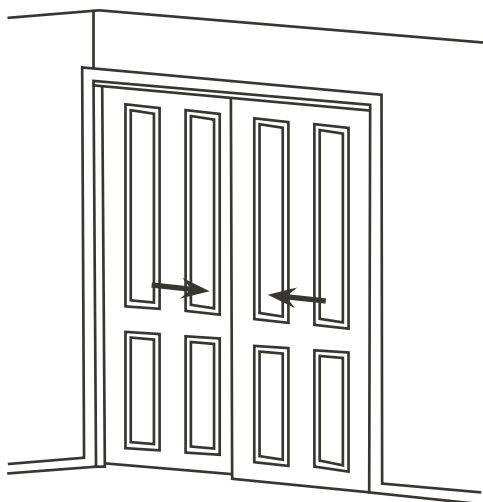
2440MM 3-DOOR UNIT TOP & BOTTOM TRACK WHEELS & GUIDES (PRE PACK)

Part No.	Description	Barcode 9323517+	Qty Pack	Cost
RSTB24W	White	422419	1	P.O.A.
RSTB24AI	Almond Ivory	422426	1	P.O.A.
RSTB24P	Primrose	422433	1	P.O.A.
RSTB24G	Gold Anodised	424628	1	P.O.A.
RSTB24S	Silver Anodised	425625	1	P.O.A.

3260MM 4-DOOR UNIT TOP & BOTTOM TRACK WHEELS & GUIDES (PRE PACK)

Part No.	Description	Barcode 9323517+	Qty Pack	Cost
RSTB32W	White	423218	1	P.O.A.
RSTB32AI	Almond Ivory	423225	1	P.O.A.
RSTB32P	Primrose	423232	1	P.O.A.
RSTB32G	Gold Anodised	424635	1	P.O.A.
RSTB32S	Silver Anodised	425632	1	P.O.A.

Pre Pack Sets to suit doors up to 920mm



1820MM 2-DOOR UNIT TOP & BOTTOM TRACK WHEELS & GUIDES (PRE PACK)

Part No.	Description	Barcode 9323517+	Qty Pack	Cost
RSTB18W	White	920168	1	P.O.A.
RSTB18AI	Almond Ivory	920175	1	P.O.A.
RSTB18P	Primrose	920182	1	P.O.A.
RSTB18G	Gold Anodised	920199	1	P.O.A.
RSTB18S	Silver Anodised	920205	1	P.O.A.

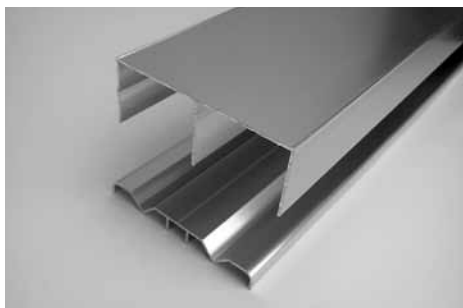
2740MM 3-DOOR UNIT TOP & BOTTOM TRACK WHEELS & GUIDES (PRE PACK)

Part No.	Description	Barcode 9323517+	Qty Pack	Cost
RSTB27W	White	920212	1	P.O.A.
RSTB27AI	Almond Ivory	920229	1	P.O.A.
RSTB27P	Primrose	920336	1	P.O.A.
RSTB27G	Gold Anodised	920243	1	P.O.A.
RSTB27S	Silver Anodised	920250	1	P.O.A.

3660MM 4-DOOR UNIT TOP & BOTTOM TRACK WHEELS & GUIDES (PRE PACK)

Part No.	Description	Barcode 9323517+	Qty Pack	Cost
RSTB36W	White	920267	1	P.O.A.
RSTB36AI	Almond Ivory	920274	1	P.O.A.
RSTB36P	Primrose	920281	1	P.O.A.
RSTB36G	Gold Anodised	920298	1	P.O.A.
RSTB36S	Silver Anodised	920304	1	P.O.A.

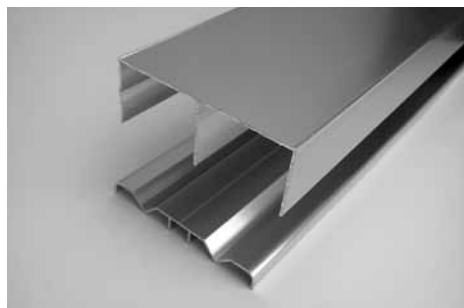
14 50kg Aluminium Robesaver Top & Bottom Track only



TOP & BOTTOM TRACK (1620MM)

Part No.	Description	Barcode 9323517+	Qty Pack	Cost
RSTBL16W	White	421801	1	P.O.A.
RSTBL16AI	Almond Ivory	422815	1	P.O.A.
RSTBL16P	Primrose	423829	1	P.O.A.
RSTBL16G	Gold Anodised	424833	1	P.O.A.
RSTBL16S	Silver Anodised	425847	1	P.O.A.

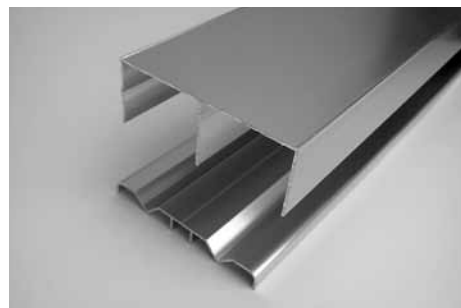
• SUIT DOORS UP TO 820MM



TOP & BOTTOM TRACK (2440MM)

Part No.	Description	Barcode 9323517+	Qty Pack	Cost
RSTBL24W	White	421856	1	P.O.A.
RSTBL24AI	Almond Ivory	422860	1	P.O.A.
RSTBL24P	Primrose	423874	1	P.O.A.
RSTBL24G	Gold Anodised	424888	1	P.O.A.
RSTBL24S	Silver Anodised	425892	1	P.O.A.

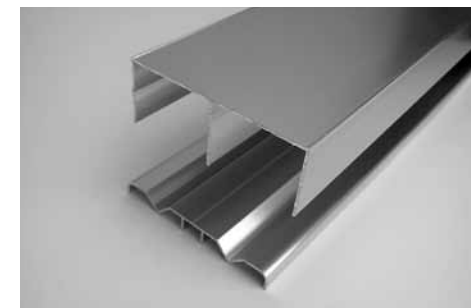
• SUIT DOORS UP TO 820MM



TOP & BOTTOM TRACK (3260MM)

Part No.	Description	Barcode 9323517+	Qty Pack	Cost
RSTBL32W	White	421900	1	P.O.A.
RSTBL32AI	Almond Ivory	422914	1	P.O.A.
RSTBL32P	Primrose	423928	1	P.O.A.
RSTBL32G	Gold Anodised	424932	1	P.O.A.
RSTBL32S	Silver Anodised	425946	1	P.O.A.

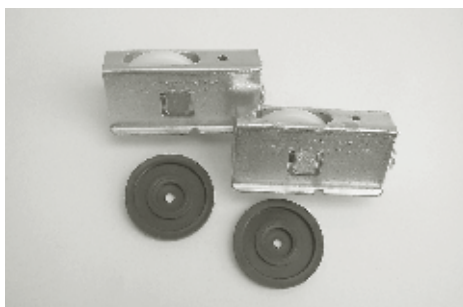
• SUIT DOORS UP TO 820MM



TOP & BOTTOM TRACK (4880MM)

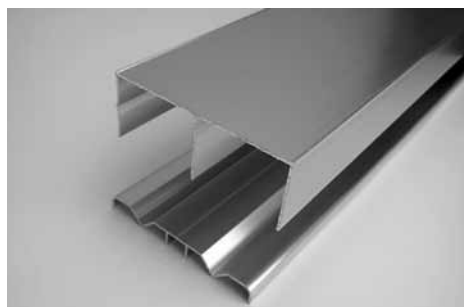
Part No.	Description	Barcode 9323517+	Qty Pack	Cost
RSTBL48W	White	421955	1	P.O.A.
RSTBL48AI	Almond Ivory	422969	1	P.O.A.
RSTBL48P	Primrose	423973	1	P.O.A.
RSTBL48G	Gold Anodised	424987	1	P.O.A.
RSTBL48S	Silver Anodised	425991	1	P.O.A.

• SUIT DOORS UP TO 820MM



SET OF FITTINGS

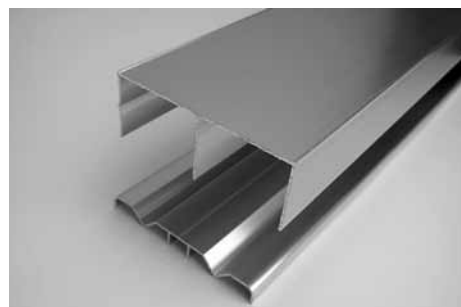
Part No.	Description	Barcode 9323517+	Qty Pack	Cost
RS42P	Pre Pack	421009	10	P.O.A.



TOP & BOTTOM TRACK (1820MM)

Part No.	Description	Barcode 9323517+	Qty Pack	Cost
RSTBL18W	White	920014	1	P.O.A.
RSTBL18AI	Almond Ivory	920021	1	P.O.A.
RSTBL18P	Primrose	920038	1	P.O.A.
RSTBL18G	Gold Anodised	920045	1	P.O.A.
RSTBL18S	Silver Anodised	920052	1	P.O.A.

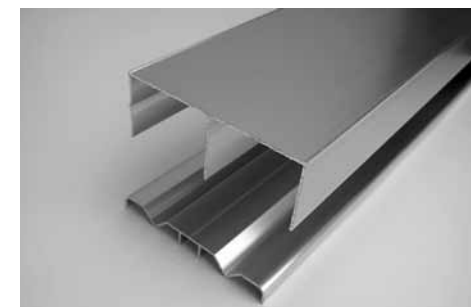
• SUIT DOORS UP TO 920MM



TOP & BOTTOM TRACK (2740MM)

Part No.	Description	Barcode 9323517+	Qty Pack	Cost
RSTBL27W	White	920069	1	P.O.A.
RSTBL27AI	Almond Ivory	920076	1	P.O.A.
RSTBL27P	Primrose	920083	1	P.O.A.
RSTBL27G	Gold Anodised	920090	1	P.O.A.
RSTBL27S	Silver Anodised	920106	1	P.O.A.

• SUIT DOORS UP TO 920MM



TOP & BOTTOM TRACK (3660MM)

Part No.	Description	Barcode 9323517+	Qty Pack	Cost
RSTBL36W	White	920113	1	P.O.A.
RSTBL36AI	Almond Ivory	920120	1	P.O.A.
RSTBL36P	Primrose	920137	1	P.O.A.
RSTBL36G	Gold Anodised	920144	1	P.O.A.
RSTBL36S	Silver Anodised	920151	1	P.O.A.

• SUIT DOORS UP TO 920MM

15mm x 30mm Aluminium Oval Tube for Wardrobes 15



WHITE POWDER COATED TUBE

Part No.	Description	Barcode 9323517+	Qty Pack	Cost
AT10W	1000mm	001102	5	P.O.A.
AT20W	2000mm	001201	5	P.O.A.
AT30W	3000mm	001300	5	P.O.A.
AT40W	4000mm	001409	5	P.O.A.



SILVER POLISHED ALUMINIUM TUBE

Part No.	Description	Barcode 9323517+	Qty Pack	Cost
AT10S	1000mm	000105	5	P.O.A.
AT20S	2000mm	000204	5	P.O.A.
AT30S	3000mm	000303	5	P.O.A.
AT40S	4000mm	000402	5	P.O.A.



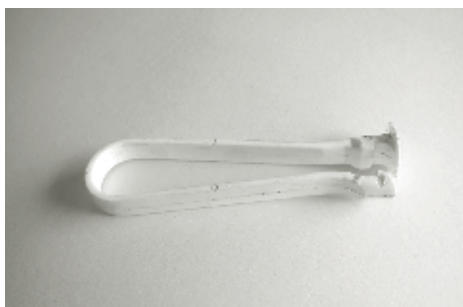
NICKEL PLATED STEEL SUPPORT

Part No.	Description	Barcode 9323517+	Qty Pack	Cost
AT001L	Loose	001621	10	P.O.A.
AT001P	Prepack	001003	10	P.O.A.



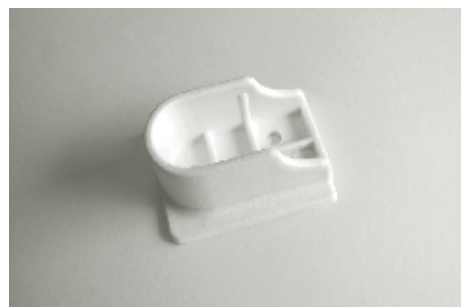
NICKEL PLATED END BRACKET

Part No.	Description	Barcode 9323517+	Qty Pack	Cost
AT002L	Loose	002635	10	P.O.A.
AT002P	Pre pack x 2	002000	10	P.O.A.



WHITE PLASTIC SUPPORT

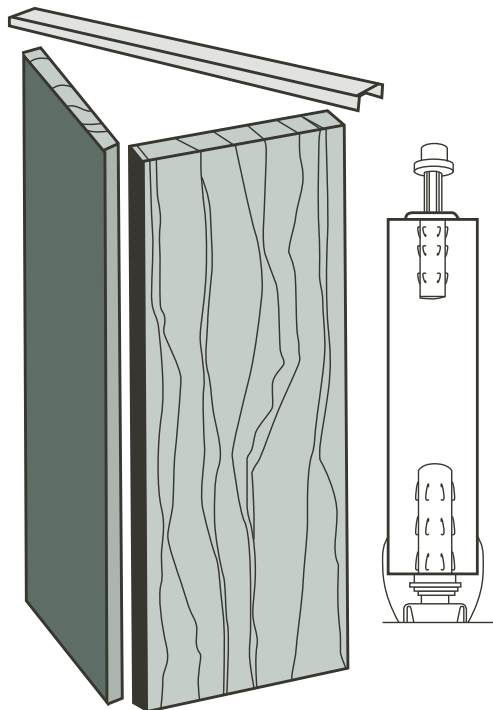
Part No.	Description	Barcode 9323517+	Qty Pack	Cost
AT011L	Loose	000167	10	P.O.A.
AT011P	Prepack	000112	10	P.O.A.



WHITE PLASTIC END BRACKET

Part No.	Description	Barcode 9323517+	Qty Pack	Cost
AT012L	Loose	000266	10	P.O.A.
AT012P	Prepack x2	000129	10	P.O.A.

• FOR FIXING INFORMATION REFER TO PAGE 33



14 KG BI-FOLD PRE PACK SETS

Part No.	Description	Barcode 9323517+	Qty Pack	Cost
2909	920mm (x 2 door)	290902	1	P.O.A.
2912	1200mm (x 2 door)	291220	1	P.O.A.
2918	1800mm (x 4 door)	291800	1	P.O.A.
2924	2400mm (x 4 door)	292401	1	P.O.A.



BROWN TRACK STEEL (22 X 13MM)

Part No.	Description	Barcode 9323517+	Qty Pack	Cost
2008A	920mm Length	290919	1	P.O.A.
2008D	1200mm Length	291237	1	P.O.A.
2008B	1800mm Length	291817	1	P.O.A.
2008C	2400mm Length	292418	1	P.O.A.



TOP PIVOT

Part No.	Description	Barcode 9323517+	Qty Pack	Cost
801	Loose	290131	1	P.O.A.
801P	Pre Pack	290186	1	P.O.A.



2-DOOR FITTINGS

Part No.	Description	Barcode 9323517+	Qty Pack	Cost
2903S	Bi-fold Fittings	290346	1	P.O.A.

• C/W BRASS HINGES ONLY



BOTTOM PIVOT

Part No.	Description	Barcode 9323517+	Qty Pack	Cost
807	Loose	290735	1	P.O.A.
807P	Pre Pack	290742	1	P.O.A.



4-DOOR FITTINGS

Part No.	Description	Barcode 9323517+	Qty Pack	Cost
2903D	c/w BP Hinges	290353	1	P.O.A.

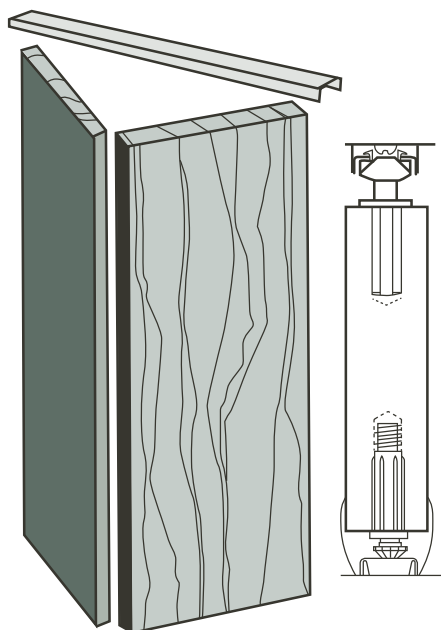
• C/W BRASS HINGES ONLY



JAMB BRACKET

Part No.	Description	Barcode 9323517+	Qty Pack	Cost
811L	Loose	298120	1	P.O.A.
811P	Pre Pack	298113	1	P.O.A.

• FOR FIXING INFORMATION REFER TO PAGE 34



12 KG BI-FOLD PRE PACK SETS

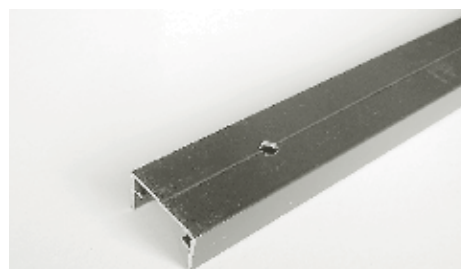
Part No.	Description	Barcode 9323517+	Qty Pack	Cost
----------	-------------	---------------------	-------------	------

• BROWN (PRE PACK)

2909AB	Brown 920mm (x 2 door)	290964	5	P.O.A.
2912AB	Brown 1200mm (x 2 door)	291244	5	P.O.A.
2918AB	Brown 1800mm (x 4 door)	291862	5	P.O.A.
2924AB	Brown 2400mm (x 4 door)	292463	5	P.O.A.

• WHITE (PRE PACK)

2909AW	White 920mm (x 2 door)	290957	5	P.O.A.
2912AW	White 1200mm (x 2 door)	291251	5	P.O.A.
2918AW	White 1800mm (x 4 door)	291855	5	P.O.A.
2924AW	White 2400mm (x 4 door)	292456	5	P.O.A.



BROWN TRACK (25 X 14MM)

Part No.	Description	Barcode 9323517+	Qty Pack	Cost
2007AB	Brown 920mm	290971		P.O.A.
2007DB	Brown 1200mm	291268		P.O.A.
2007BB	Brown 1800mm	291879		P.O.A.
2007CB	Brown 2400mm	292470		P.O.A.



WHITE TRACK (25 X 14MM)

Part No.	Description	Barcode 9323517+	Qty Pack	Cost
2007AW	White 920mm	290988	5	P.O.A.
2007DW	White 1200mm	291275	5	P.O.A.
2007BW	White 1800mm	291886	5	P.O.A.
2007CW	White 2400mm	292487	5	P.O.A.

SLIDE GUIDE

Part No.	Description	Barcode 9323517+	Qty Pack	Cost
2066	Loose	206675	1	P.O.A.
2066P	Prepack	206668	1	P.O.A.



TOP PIVOT

Part No.	Description	Barcode 9323517+	Qty Pack	Cost
2062	Loose	206279	1	P.O.A.
2062P	Pre pack	206262	1	P.O.A.



2-DOOR FITTINGS

Part No.	Description	Barcode 9323517+	Qty Pack	Cost
2903KBP	Incl. Brass PL Hinges x 3	290360	1	P.O.A.
2903KCP	Incl. Chrome PL Hinges x 3	290353	1	P.O.A.

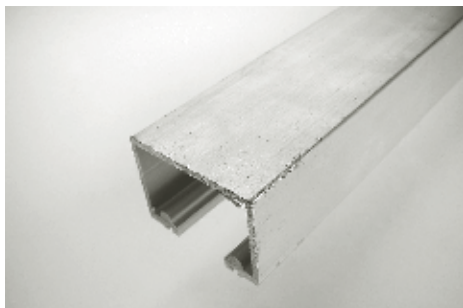


BOTTOM PIVOT

Part No.	Description	Barcode 9323517+	Qty Pack	Cost
2063	Loose	206378	1	P.O.A.
2063P	Pre pack	206361	1	P.O.A.

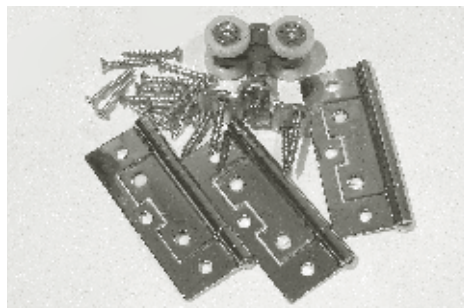
18 25kg Aluminium Johnson Multi-Fold

• FOR FIXING INFORMATION REFER TO PAGE 35



MULTI-FOLD TRACK ALUMINIUM (32 x 30)

Part No.	Description	Barcode 9323517+	Qty Pack	Cost
2510	1000mm Length	251019	1	P.O.A.
2518	1800mm Length	251811	1	P.O.A.
2525	2500mm Length	252511	1	P.O.A.
2533	3300mm Length	253310	1	P.O.A.
2551	5100mm Length	255116	1	P.O.A.



25KG HANGER SET & HINGES

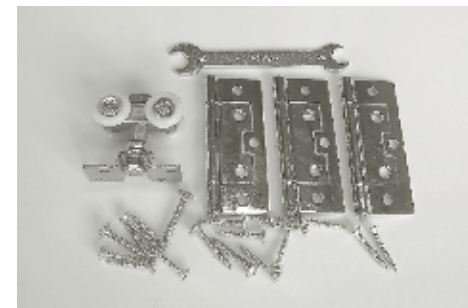
Part No.	Description	Barcode 9323517+	Qty Pack	Cost
2511BP	Brass Plated Hinges x 3	251125	1	P.O.A.
2511CP	Chrome Plated Hinges x 3	251101	1	P.O.A.

• NYLON ASSEMBLY - C/W BALL BEARING WHEELS



PIVOT SET

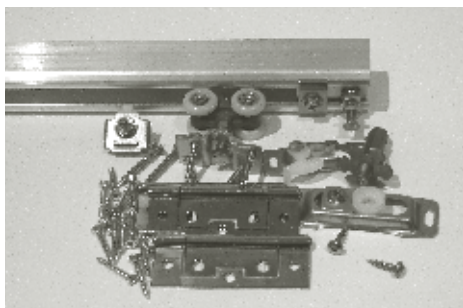
Part No.	Description	Barcode 9323517+	Qty Pack	Cost
2563P	Pivot Set	256304	1	P.O.A.



75KG HANGER SET & HINGES

Part No.	Description	Barcode 9323517+	Qty Pack	Cost
2511HBP	Brass Plated Hinges x 3	251132	1	P.O.A.
2511HCP	Chrome Plated Hinges x 3	251149	1	P.O.A.

• S/STEEL ASSEMBLY - C/W BALL BEARING WHEELS



25KG PRE PACK SETS

Part No.	Description	Barcode 9323517+	Qty Pack	Cost
2510P	1000mm (x 2 door)	251026	1	P.O.A.
2518P	1800mm 4 door (2 x 2)	251828	1	P.O.A.



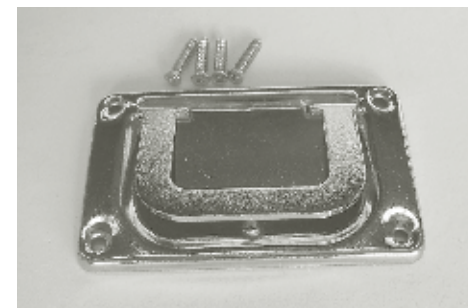
FLOOR BRACKET

Part No.	Description	Barcode 9323517+	Qty Pack	Cost
804L	Loose	258049	10	P.O.A.
804P	Pre pack	258056	10	P.O.A.



CARPET RISER

Part No.	Description	Barcode 9323517+	Qty Pack	Cost
836L	Loose	836001	10	P.O.A.
836P	Pre pack	836018	10	P.O.A.



PRESSED STEEL 65 x 3 x 40mm 'D' PULLS

Part No.	Description	Barcode 9323517+	Qty Pack	Cost
2900BL	Brass / Loose	290117	10	P.O.A.
2900BP	Brass /Pre Pack	290018	10	P.O.A.
2900BL	Chrome / Loose	290124	10	P.O.A.
2900BP	Chrome /Pre Pack	290025	10	P.O.A.

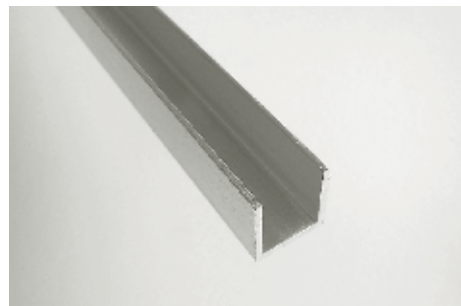
> p. 03 9558 2555 > e. ActiveHardware@netspace.net.au
> f. 03 9558 7111 > w. www.activehardware.com.au



ROLLER GUIDE

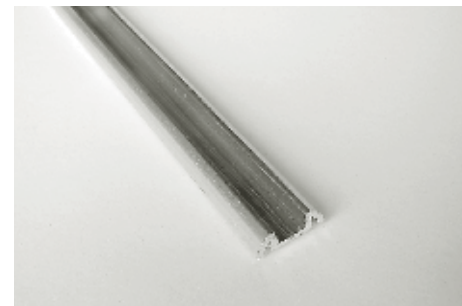
Part No.	Description	Barcode 9323517+	Qty Pack	Cost
2064L	Loose	206415	1	P.O.A.
2064P	Pre Pack	206408	1	P.O.A.

• TO SUIT 16 X 16MM CHANNEL



ALUMINIUM CHANNEL (16MM X 16MM)

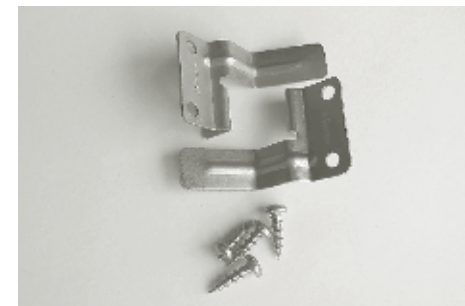
Part No.	Description	Barcode 9323517+	Qty Pack	Cost
ACG	Multi-fold channel			P.O.A.



THRESHOLD CHANNEL (25MM X 9MM)

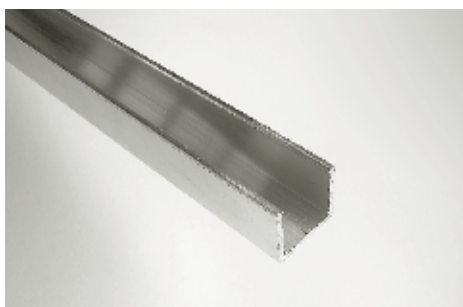
Part No.	Description	Barcode 9323517+	Qty Pack	Cost
92	Aluminium Channel			P.O.A.

• USE 801 BI-FOLD GUIDE - PAGE 16



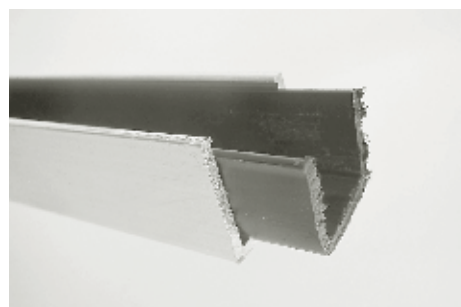
DOOR ALIGNERS

Part No.	Description	Barcode 9323517+	Qty Pack	Cost
808P	Pressed Steel	298083	1	P.O.A.



BOTTOM CHANNEL (21 x 20MM)

Part No.	Description	Barcode 9323517+	Qty Pack	Cost
94A	Pivot-Fold Channel			P.O.A.



BOTTOM CHANNEL / POLY PROP INSERT

Part No.	Description	Barcode 9323517+	Qty Pack	Cost
94PPA	25 x 23mm Pivot-Fold Channel			P.O.A.



BI-FOLD HINGE (75MM)

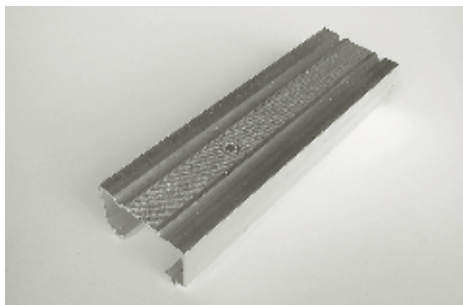
Part No.	Description	Barcode 9323517+	Qty Pack	Cost
221CL	Loose / Chrome	221067	1	P.O.A.
221CP	Pre Pack / Chrome x 3	221104	1	P.O.A.
221BL	Loose / Brass PL	221074	1	P.O.A.
221BP	Pre Pack / Brass PL x 3	221203	1	P.O.A.



ACME BI-FOLD HINGE (75MM)

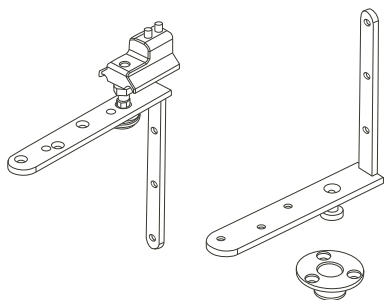
Part No.	Description	Barcode 9323517+	Qty Pack	Cost
220B	Brass PL / Loose	221081	1	P.O.A.
220C	Chrome PL / Loose	221180	1	P.O.A.

• FOR FIXING INFORMATION REFER TO PAGE 36 & 37



ACCORDION TRACK (48 X 28MM)

Part No.	Description	Barcode 9323517+	Qty Pack	Cost
2610	1000mm Length	261087	1	P.O.A.
2618	1800mm Length	261889	1	P.O.A.
2625	2500mm Length	262589	1	P.O.A.
2633	3300mm Length	263388	1	P.O.A.
2651	5100mm Length	265580	1	P.O.A.



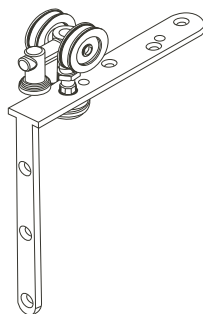
PIVOT SET

Part No.	Description	Barcode 9323517+	Qty Pack	Cost
21HP	Pivot Set	250210	1	P.O.A.



ACCORDION PIVOT SET

Part No.	Description	Barcode 9323517+	Qty Pack	Cost
2663P	Pre Pack	266303	1	P.O.A.



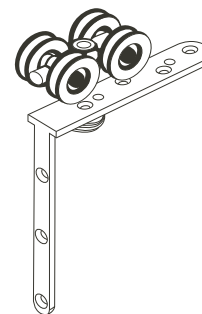
2-WHEEL END HANGER

Part No.	Description	Barcode 9323517+	Qty Pack	Cost
21HN	2-wheel	250227	1	P.O.A.



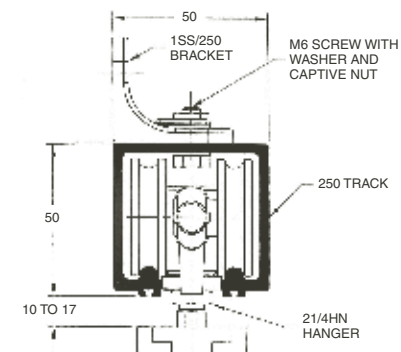
ACCORDION 4-WHEEL HANGER

Part No.	Description	Barcode 9323517+	Qty Pack	Cost
2640L	Loose	264033	1	P.O.A.
2640P	Pre Pack	264026	1	P.O.A.



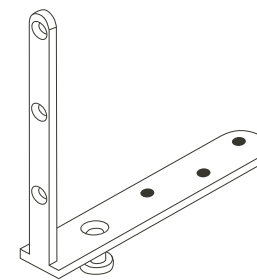
4-WHEEL INTERMEDIATE HANGER

Part No.	Description	Barcode 9323517+	Qty Pack	Cost
21/4HN	4-wheel	250241	1	P.O.A.



75KG PIVOT FOLD TRACK (50 X 50MM)

Part No.	Description	Barcode 9323517+	Qty Pack	Cost
25020	2000mm Length	250203	1	P.O.A.
25030	3000mm Length	250302	1	P.O.A.
25040	4000mm Length	250401	1	P.O.A.
25060	6000mm Length	250609	1	P.O.A.

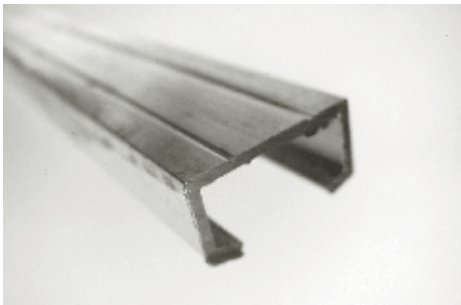


BOTTOM ROLLER GUIDE

Part No.	Description	Barcode 9323517+	Qty Pack	Cost
21RB/94		250258	1	P.O.A.

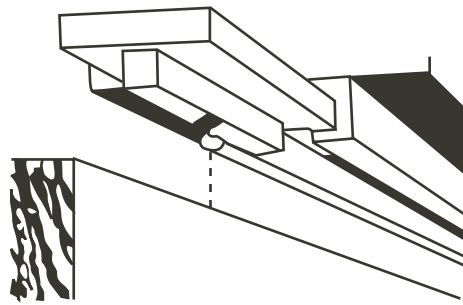
• USE WITH 94A & 94PPA BOTTOM CHANNEL

10kg Aluminium Cupboard Track / 5mm White or Brown Plastic Glass Track 21



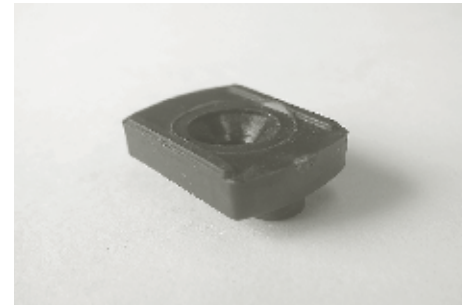
CUPBOARD TRACK (19 X 11MM)

Part No.	Description	Barcode 9323517+	Qty Pack	Cost
CTL12	1200mm Length	531210	10	P.O.A.
CTL18	1800mm Length	531814	10	P.O.A.
CTL24	2400mm Length	532415	10	P.O.A.
CTL36	3600mm Length	533610	10	P.O.A.



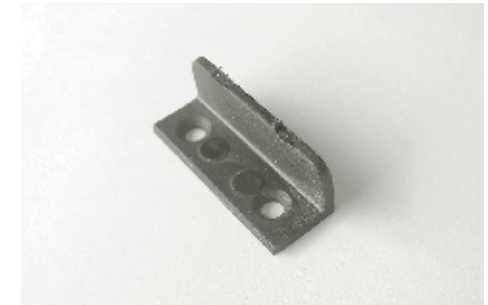
PRE PACK SETS

Part No.	Description	Barcode 9323517+	Qty Pack	Cost
CTP12	1200mm / Pre Pack	531203	5	P.O.A.
CTP18	1800mm / Pre Pack	531807	5	P.O.A.



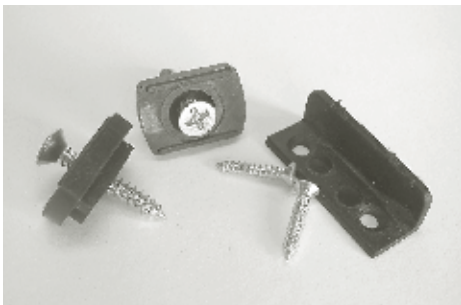
PLASTIC SLIDE

Part No.	Description	Barcode 9323517+	Qty Pack	Cost
530S	Plastic Slide / Loose	530107	10	P.O.A.



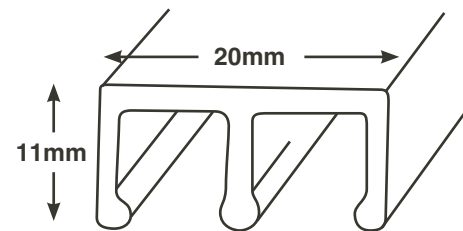
PLASTIC GUIDE

Part No.	Description	Barcode 9323517+	Qty Pack	Cost
530G	Plastic Guide / Loose	530114	10	P.O.A.



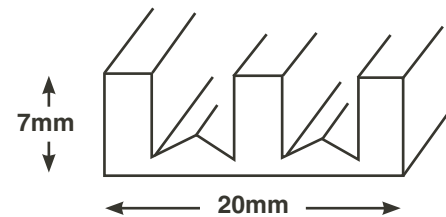
PRE PACK FITTINGS

Part No.	Description	Barcode 9323517+	Qty Pack	Cost
530P	Cupboard Fittings	530008	10	P.O.A.



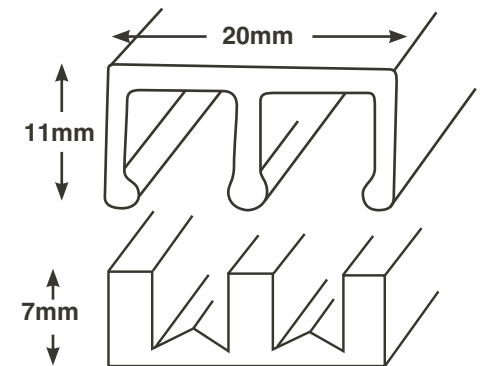
TOP GLASS TRACK (5MM)

Part No.	Description	Barcode 9323517+	Qty Pack	Cost
GTL36WT	3600mm White / Loose	555551	10	P.O.A.
GTL36BRT	3600mm Brown / Loose	555568	10	P.O.A.



BOTTOM GLASS TRACK (5MM)

Part No.	Description	Barcode 9323517+	Qty Pack	Cost
GTL36WB	3600mm White / Loose	555575	10	P.O.A.
GTL36BRB	3600mm Brown / Loose	555582	10	P.O.A.



PRE PACK SETS TOP & BOTTOM (5MM)

Part No.	Description	Barcode 9323517+	Qty Pack	Cost
GTP12W	1200mm White	551218	5	P.O.A.
GTP18W	1800mm White	551812	5	P.O.A.
GTP12BR	1200mm Brown	551225	5	P.O.A.
GTP18BR	1800mm Brown	551829	5	P.O.A.

22 Brass & Aluminium Door Rail



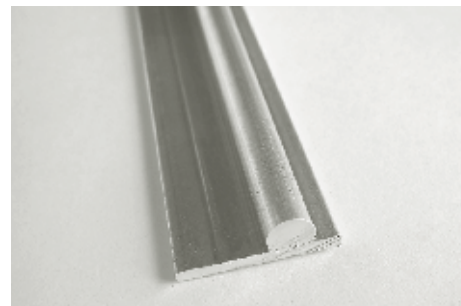
SASH TRACK (12 x 8MM)

Part No.	Description	Barcode 9323517+	Qty Pack	Cost
ASR20	2000mm length	544418	1	P.O.A.
ASR40	4000mm length	544494	1	P.O.A.



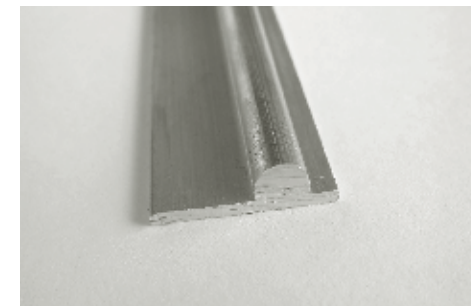
SASH HEAD GUIDE (25 x 15MM)

Part No.	Description	Barcode 9323517+	Qty Pack	Cost
TRS20	2000mm length	544487	1	P.O.A.
TRS40	4000mm length	544586	1	P.O.A.



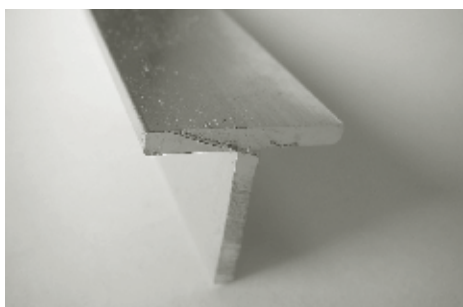
ALUMINIUM RAIL (19 x 6MM)

Part No.	Description	Barcode 9323517+	Qty Pack	Cost
ABR18	1750mm length	544425	1	P.O.A.
ABR26	2600mm length	544432	1	P.O.A.
ABR35	3500mm length	544531	1	P.O.A.



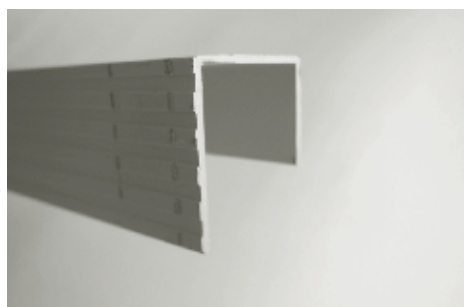
BRASS RAIL (20 x 6MM)

Part No.	Description	Barcode 9323517+	Qty Pack	Cost
BBR20	1900mm length	544449	1	P.O.A.
BBR30	2900mm length	544456	1	P.O.A.
BBR39	3900mm length	544555	1	P.O.A.



HEAD GUIDE (25 x 25MM)

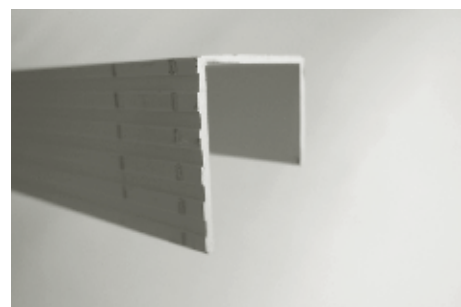
Part No.	Description	Barcode 9323517+	Qty Pack	Cost
TR20	2000mm length	544463	1	P.O.A.
TR30	3000mm length	544470	1	P.O.A.
TR40	4000mm length	544579	1	P.O.A.



PELMET COVER GUIDE SILVER (25 x 30MM)

Part No.	Description	Barcode 9323517+	Qty Pack	Cost
PCG20S	2000mm length	544562		P.O.A.
PCG30S	3000mm length	544593		P.O.A.
PCG40S	4000mm length	544524		P.O.A.

• ANODISED



PELMET COVER GUIDE BRONZE (25 x 30MM)

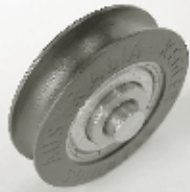
Part No.	Description	Barcode 9323517+	Qty Pack	Cost
PCB20B	2000mm length	544616		P.O.A.
PCB30B	3000mm length	544623		P.O.A.
PCB40B	4000mm length	544630		P.O.A.

• ANODISED



NATURAL ANODISED COVER RAIL (15 x 8MM)

Part No.	Description	Barcode 9323517+	Qty Pack	Cost
ACR20	2150mm length	544517		P.O.A.
ACR40	4000mm length	544500		P.O.A.



(32 x 8MM) 6.5MM AXLE 25KG LOAD

Part No.	Description	Barcode 9323517+	Qty Pack	Cost
ND3200L	Loose	320067	10	P.O.A.
ND3200P	Pre Pack	320012	10	P.O.A.



(32 X 8MM) 7MM BORE 25KG LOAD

Part No.	Description	Barcode 9323517+	Qty Pack	Cost
ND3201L	Loose	320166	10	P.O.A.
ND3201P	Pre Pack	320104	10	P.O.A.



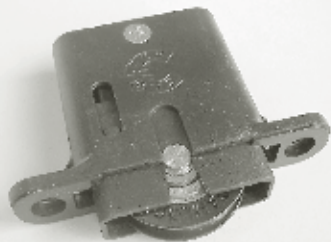
(32 x 8MM) 5MM AXLE 25KG LOAD

Part No.	Description	Barcode 9323517+	Qty Pack	Cost
ND3208L	Loose	320869	10	P.O.A.
ND3208P	Pre Pack	320807	10	P.O.A.



(36 x 8MM) 6.5MM AXLE 25KG LOAD

Part No.	Description	Barcode 9323517+	Qty Pack	Cost
ND3607L	Loose	360766	10	P.O.A.
ND3607P	Pre Pack	360704	10	P.O.A.



SECURITY DOOR CARRIAGE 25KG

Part No.	Description	Barcode 9323517+	Qty Pack	Cost
N3200SFL	Loose	320067	10	P.O.A.
N3200SFP	Pre Pack	320029	10	P.O.A.

• 47 X 16 X 47MM



3MM AXLE (16 x 5MM) 15KG LOAD

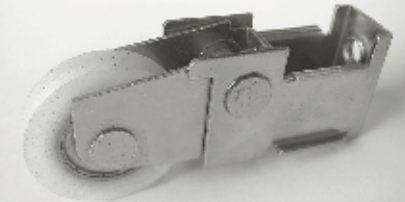
Part No.	Description	Barcode 9323517+	Qty Pack	Cost
NL1602L	Loose	160267	10	P.O.A.
NL1602P	Pre Pack	160205	10	P.O.A.



37 x 8MM WHEEL (25KG LOAD)

Part No.	Description	Barcode 9323517+	Qty Pack	Cost
S371NDL	Loose	371069	10	P.O.A.
S371NDP	Pre Pack	371007	10	P.O.A.

• 55 X 15 X 40MM



32 x 8MM CARRIAGE (25KG LOAD)

Part No.	Description	Barcode 9323517+	Qty Pack	Cost
S20NDL	Loose	200062	10	P.O.A.
S20NDSP	Pre Pack	200000	10	P.O.A.

• 75 X 18 X 18MM

24 Sliding Door Wheels



19MM FLAT SHOWER WHEEL

Part No.	Description	Barcode 9323517+	Qty Pack	Cost
SJ1901L	Loose	190165	10	P.O.A.
SJ1901P	Pre Pack	190103	10	P.O.A.

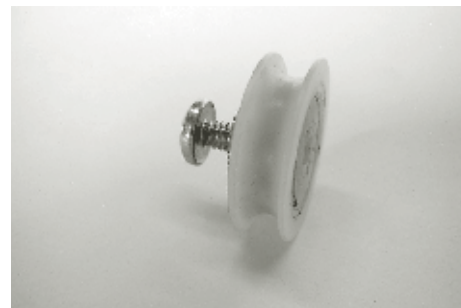
• 12 KG LOAD



19MM ROUND SHOWER WHEEL

Part No.	Description	Barcode 9323517+	Qty Pack	Cost
SJ1902L	Loose	190264	10	P.O.A.
SJ1902P	Pre Pack	190202	10	P.O.A.

• 12 KG LOAD



24MM FLYSCREEN WHEEL

Part No.	Description	Barcode 9323517+	Qty Pack	Cost
SJ2401L	Loose	240167	10	P.O.A.
SJ2401P	Pre Pack	240105	10	P.O.A.

• 12 KG LOAD



24 X 7MM 4.5 AXLE FLYSCREEN WHEEL

Part No.	Description	Barcode 9323517+	Qty Pack	Cost
SJ2404L	Loose	240464	10	P.O.A.
SJ2404P	Pre Pack	240402	10	P.O.A.

• 12 KG LOAD



32MM NYLON ADJUSTABLE CARRIAGE

Part No.	Description	Barcode 9323517+	Qty Pack	Cost
S328NDL	Loose	328063	10	P.O.A.
S328NDP	Pre Pack	328001	10	P.O.A.

• 25 KG LOAD (75 X 14 X 32MM)



32MM BRASS ADJUSTABLE CARRIAGE

Part No.	Description	Barcode 9323517+	Qty Pack	Cost
S324BDL	Loose	324065	10	P.O.A.
S324BDP	Pre Pack	324003	10	P.O.A.

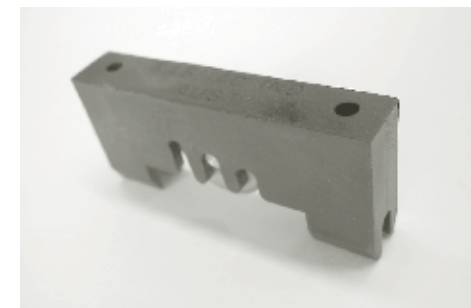
• 50 KG LOAD (75 X 14 X 32MM)



37MM STAINLESS STEEL WHEEL

Part No.	Description	Barcode 9323517+	Qty Pack	Cost
S35BDL	Loose	350064	10	P.O.A.
S35BDP	Pre Pack	350002	10	P.O.A.

• 50 KG LOAD (50 X 15 X 35MM)



16MM BRASS WHEEL CARRIAGE

Part No.	Description	Barcode 9323517+	Qty Pack	Cost
N1600GLL	Loose	160069	10	P.O.A.
N1600GLP	Pre Pack	160007	10	P.O.A.

• 15 KG LOAD (50 X 9 X 17MM)



2-WHEEL SWIVEL CARRIAGE

Part No.	Description	Barcode 9323517+	Qty Pack	Cost
9210L	Loose	921011	5	P.O.A.
9210P	Pre Pack	921004	5	P.O.A.

• 50 KG LOAD



29MM BALL BEARING WHEEL

Part No.	Description	Barcode 9323517+	Qty Pack	Cost
270L	Loose	270010	10	P.O.A.
270P	Pre Pack	270003	10	P.O.A.



29MM PLASTIC WHEEL / METAL STUD

Part No.	Description	Barcode 9323517+	Qty Pack	Cost
271L	Loose	271017	10	P.O.A.
271P	Pre Pack	271000	10	P.O.A.



41MM BALL BEARING WHEEL

Part No.	Description	Barcode 9323517+	Qty Pack	Cost
NP4101	Loose	410201	1	P.O.A.
NP4101P	Pre Pack	410102	1	P.O.A.

• 50 KG LOAD



42MM BALL BEARING WHEEL

Part No.	Description	Barcode 9323517+	Qty Pack	Cost
NP4202L	Loose	420309	1	P.O.A.
NP4202P	Pre Pack	420200	1	P.O.A.

• 100 KG LOAD



20MM BALL BEARING WHEEL

Part No.	Description	Barcode 9323517+	Qty Pack	Cost
320WL	Loose	322016	10	P.O.A.
320WP	Pre Pack	322009	10	P.O.A.



OFFSET DOOR CARRIAGE

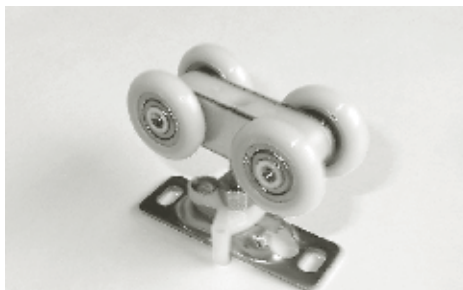
Part No.	Description	Barcode 9323517+	Qty Pack	Cost
2611AL	Loose	261124	1	P.O.A.
2611AP	Pre Pack	261100	1	P.O.A.



ACCORDIAN 4-WHEEL HANGER

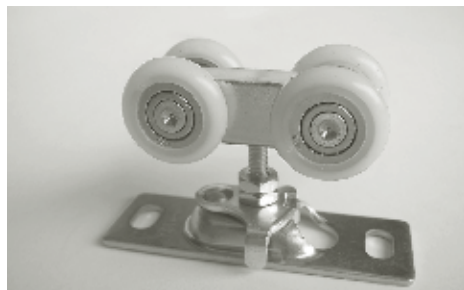
Part No.	Description	Barcode 9323517+	Qty Pack	Cost
2640L	Loose	264033	1	P.O.A.
2640P	Pre Pack	264026	1	P.O.A.

26 Sliding Door Wheels



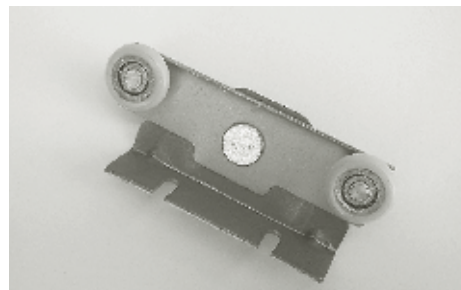
25KG MULTI-FOLD HANGER

Part No.	Description	Barcode 9323517+	Qty Pack	Cost
284SL	Loose	284116	10	P.O.A.
284SP	Pre Pack	284215	10	P.O.A.



75KG HUSKY HANGER

Part No.	Description	Barcode 9323517+	Qty Pack	Cost
284L	Loose	284314	10	P.O.A.
284P	Pre Pack	284413	10	P.O.A.



20MM WHEELS TANDEM CARRIAGE

Part No.	Description	Barcode 9323517+	Qty Pack	Cost
192L	Loose	192015	10	P.O.A.
192P	Pre Pack	192008	10	P.O.A.



REAR MOUNT DOOR WHEEL

Part No.	Description	Barcode 9323517+	Qty Pack	Cost
RM41L	Loose	421207	10	P.O.A.
RM41P	Pre Pack	421214	10	P.O.A.



NYLON WHEELS TANDEM CARRIAGE

Part No.	Description	Barcode 9323517+	Qty Pack	Cost
9421L	Nylon / Loose	942108	10	P.O.A.
9421P	Nylon / Pre Pack	942115	10	P.O.A.

• 80KG LOAD (112 X 18 X 30MM)



BRASS WHEELS TANDEM CARRIAGE

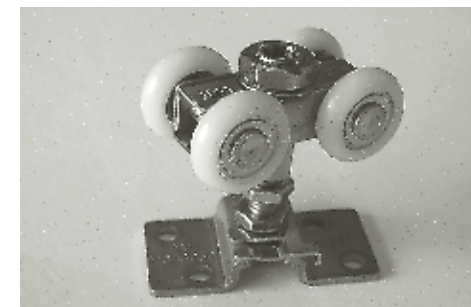
Part No.	Description	Barcode 9323517+	Qty Pack	Cost
9422L	Brass / Loose	942207	10	P.O.A.
9422P	Brass / Pre Pack	942214	10	P.O.A.

• 150KG LOAD (112 X 18 X 30MM)



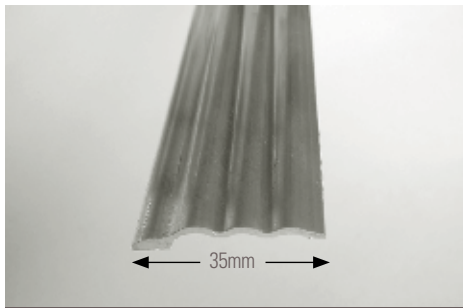
25KG NYLON HOUSING HANGER

Part No.	Description	Barcode 9323517+	Qty Pack	Cost
604L	Nylon / Loose	604006	10	P.O.A.
604P	Nylon / Pre Pack	604013	10	P.O.A.



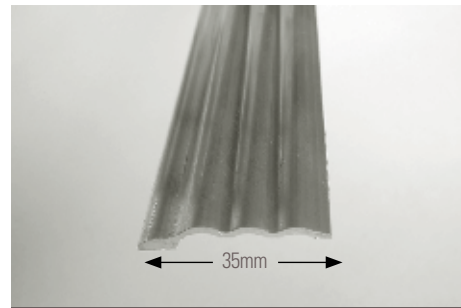
75KG STAINLESS STEEL HANGER

Part No.	Description	Barcode 9323517+	Qty Pack	Cost
604SSL	S/Steel / Loose	604105	10	P.O.A.
604SSP	S/Steel / Pre Pack	604112	10	P.O.A.



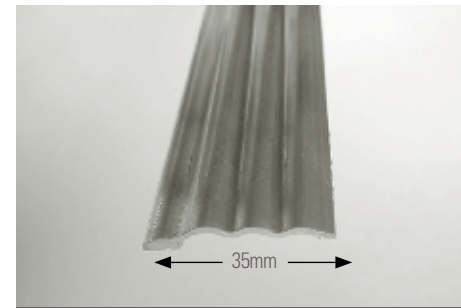
820MM CARPET TRIMS + NAILS (LOOSE)

Part No.	Description	Barcode 9323517+	Qty Pack	Cost
820SDL	820mm Silver	820475	10	P.O.A.
820GDL	820mm Gold	820482	10	P.O.A.
820BDL	820mm Bronze	820499	10	P.O.A.
820PDL	820mm Pewter	820505	10	P.O.A.



1640MM CARPET TRIMS + NAILS (LOOSE)

Part No.	Description	Barcode 9323517+	Qty Pack	Cost
1640SDL	1640mm Silver	164050	10	P.O.A.
1640GDL	1640mm Gold	164067	10	P.O.A.
1640BDL	1640mm Bronze	164074	10	P.O.A.
1640PDL	1640mm Pewter	164081	10	P.O.A.



3300MM CARPET TRIMS + NAILS (LOOSE)

Part No.	Description	Barcode 9323517+	Qty Pack	Cost
3300SDL	3300mm Silver	330059	10	P.O.A.
3300GDL	3300mm Gold	330066	10	P.O.A.
3300BDL	3300mm Bronze	330073	10	P.O.A.
3300PDL	3300mm Pewter	330080	10	P.O.A.



30MM CARPET TRIM NAILS

Part No.	Description	Barcode 9323517+	Qty Pack	Cost
3025ZL	Zinc Plate / Loose	302599	200	P.O.A.
3025ZP	Zinc Plate P/Pack x 20	302513	10	P.O.A.
3025BL	Brass Plate / Loose	302582	200	P.O.A.
3025BP	Brass Plate P/Pack x 20	302520	10	P.O.A.



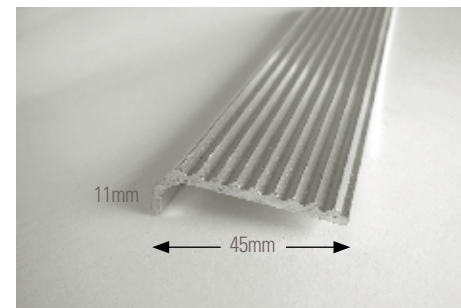
820MM CARPET TRIMS + NAILS (PRE PACK)

Part No.	Description	Barcode 9323517+	Qty Pack	Cost
820SDP	820mm Silver	820109	10	P.O.A.
820GDP	820mm Gold	820208	10	P.O.A.
820PDP	820mm Pewter	820307	10	P.O.A.
820BDP	820mm Bronze	820406	10	P.O.A.



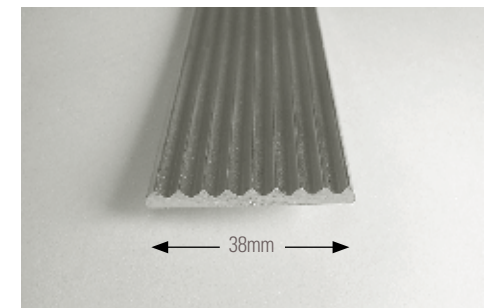
1640MM CARPET TRIMS + NAILS (PRE PACK)

Part No.	Description	Barcode 9323517+	Qty Pack	Cost
1640SDP	1640 mm Silver	164012	10	P.O.A.
1640GDP	1640 mm Gold	164029	10	P.O.A.
1640PDP	1640 mm Pewter	164036	10	P.O.A.
1640BDP	1640 mm Bronze	164043	10	P.O.A.



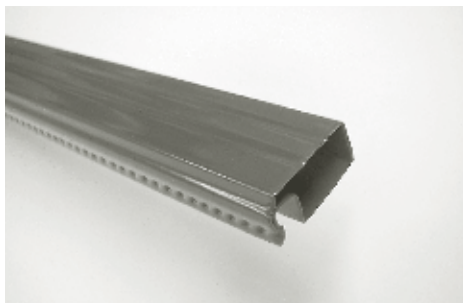
BULLNOSE STAIR TREAD (LOOSE)

Part No.	Description	Barcode 9323517+	Qty Pack	Cost
1000SBL	1000mm Silver / Loose	100010	5	P.O.A.
1000GBL	1000mm Gold / Loose	100027	5	P.O.A.
2000SBL	2000mm Silver / Loose	200017	5	P.O.A.
2000GBL	2000mm Gold / Loose	200024	5	P.O.A.

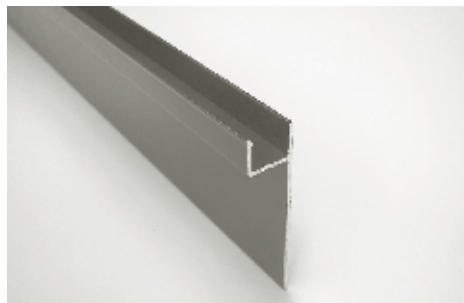


FLAT STAIR TREAD (LOOSE)

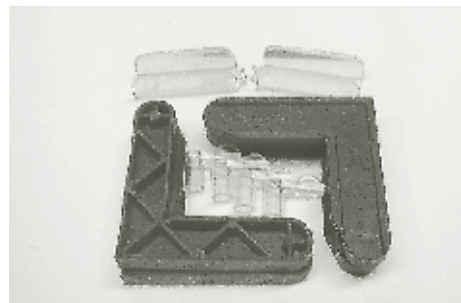
Part No.	Description	Barcode 9323517+	Qty Pack	Cost
1000SFL	1000mm Silver / Loose	100034	5	P.O.A.
1000GFL	1000mm Gold / Loose	100041	5	P.O.A.
2000SFL	2000mm Silver / Loose	200031	5	P.O.A.
2000GFL	2000mm Gold / Loose	200048	5	P.O.A.

**FLYSCREEN FRAME (25 X 11MM)**

Part No.	Description	Barcode 9323517+	Qty Pack	Cost
2500M	2500mm Mill	250012	10	P.O.A.
2500W	2500mm White	250029	10	P.O.A.
2500BR	2500mm Brown	250036	10	P.O.A.
2500BE	2500mm Beige	250043	10	P.O.A.
2500P	2500mm Primrose	250067	10	P.O.A.
2500G	2500mm Green	250050	10	P.O.A.
2500BL	2500mm Black	250074	10	P.O.A.

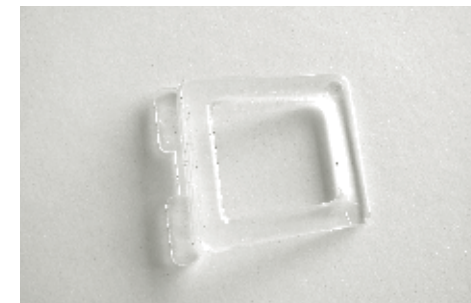
**50MM SILL CLIP-IN**

Part No.	Description	Barcode 9323517+	Qty Pack	Cost
1250M	1250mm Mill	125044	5	P.O.A.
1250W	1250mm White	125051	5	P.O.A.
1250BR	1250mm Brown	125068	5	P.O.A.
1250BE	1250mm Beige	125075	5	P.O.A.
1250P	1250mm Primrose	125082	5	P.O.A.
1250G	1250mm Green	125099	5	P.O.A.
1250BL	1250mm Black	125037	5	P.O.A.

**SET ON FITTINGS**

Part No.	Description	Barcode 9323517+	Qty Pack	Cost
740CP	Pre Pack	740100	10	P.O.A.

- **CLEAR PLASTIC / BLACK CORNER STAKES**

**FLEX HANDLE - CLEAR PLASTIC**

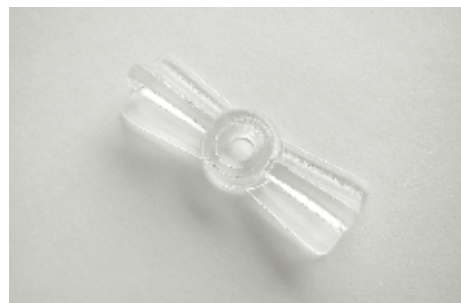
Part No.	Description	Barcode 9323517+	Qty Pack	Cost
714C	Loose	714996	100	P.O.A.
714CP	2 per P/P	714002	10	P.O.A.

**FLUSH TURN BUTTONS - CLEAR PLASTIC**

Part No.	Description	Barcode 9323517+	Qty Pack	Cost
715C	Loose	715016	100	P.O.A.
715CP	4 per P/P	715009	10	P.O.A.

**11MM OFFSET TURN BUTTONS - PLASTIC**

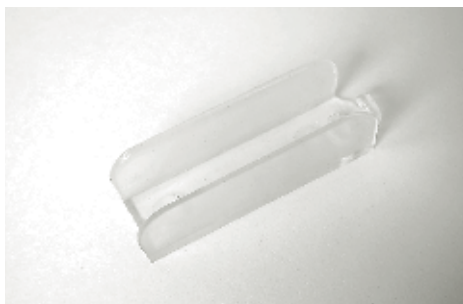
Part No.	Description	Barcode 9323517+	Qty Pack	Cost
716CL	Loose	716990	100	P.O.A.
716CP	4 per P/P	716006	10	P.O.A.

**40MM BUTTERFLY CLIPS - PLASTIC**

Part No.	Description	Barcode 9323517+	Qty Pack	Cost
717C	Loose	717997	100	P.O.A.
717CP	4 per P/P	717003	10	P.O.A.

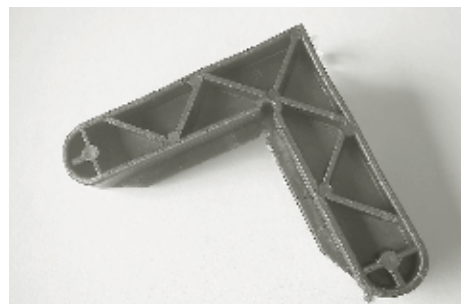
**40MM BUTTERFLY CLIPS - DIECAST**

Part No.	Description	Barcode 9323517+	Qty Pack	Cost
727L	Loose	727019	100	P.O.A.
727P	4 per P/P	727026	10	P.O.A.



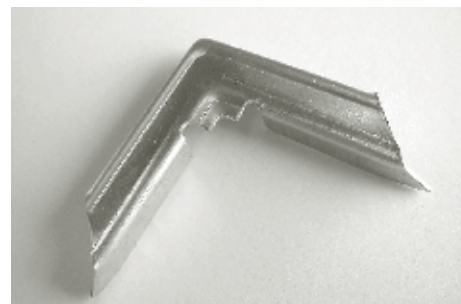
CLEAR HINGES

Part No.	Description	Barcode 9323517+	Qty Pack	Cost
718C	Loose	718994	100	P.O.A.
718CP	2 per P/P	718000	10	P.O.A.



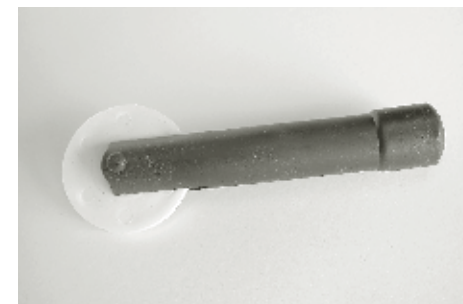
PLASTIC CORNER STAKES

Part No.	Description	Barcode 9323517+	Qty Pack	Cost
719L	Loose	719991	100	P.O.A.
719P	4 per P/P	719007	10	P.O.A.



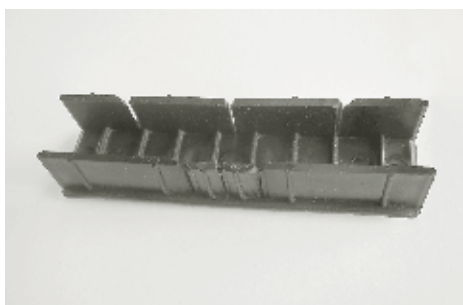
METAL CORNER STAKES

Part No.	Description	Barcode 9323517+	Qty Pack	Cost
729L	Loose	729815	100	P.O.A.
729P	4 per P/P	729808	10	P.O.A.



PLASTIC SPLINE ROLLER

Part No.	Description	Barcode 9323517+	Qty Pack	Cost
720L	Black / Loose	720997	10	P.O.A.
720P	Black / Pre Pack	720003	10	P.O.A.



PLASTIC MITRE BOX

Part No.	Description	Barcode 9323517+	Qty Pack	Cost
721L	Black / Loose	721994	10	P.O.A.
721P	Black / Pre Pack	721000	10	P.O.A.



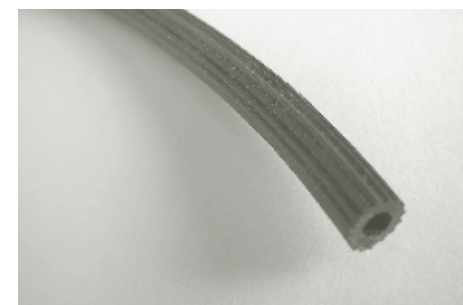
PLASTIC PLUNGER PINS

Part No.	Description	Barcode 9323517+	Qty Pack	Cost
730L	Loose	730019	10	P.O.A.
730P	Black / 2 per P/P	730002	10	P.O.A.



300M X 6MM BLACK SPLINE

Part No.	Description	Barcode 9323517+	Qty Pack	Cost
722	300m per roll	722991	1 roll	P.O.A.



PRE PACK SPLINE

Part No.	Description	Barcode 9323517+	Qty Pack	Cost
726P	6m Pre Pack	726005	5	P.O.A.
728P	8m Pre Pack	728009	5	P.O.A.

Classic Four-Ball Sliding Door Track (50kg)

• REFER PAGE 7

C/W revolving steel balls. (50kg weight capacity)

Step 1

Fit headboard (88mm wide x 19mm thick) along wall to where door is sliding. Bottom edge of headboard should be flush with bottom edge of wall, above the opening.

Step 2

Draw a horizontal line along headboard 55mm above actual height of door resting on floor. Place bottom back edge of track on marked line and screw in position using medium screws.

Step 3

Grove the bottom of the door 25mm deep and 5mm wide.

Step 4

Place the door carriage on top of the door (equal distance from each end), and mark the slots. Drill 14mm diameter holes 20mm deep, on centre line of door for bolts.

Step 5

Fix the door plates over holes using large screws.

Step 6

Assemble parts to carriage and door plates as per illustration.

Step 7

Tilt door or slide in from end of track to hang.

Step 8

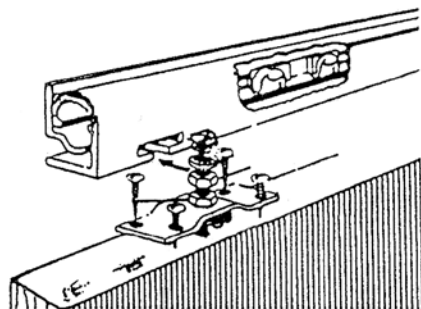
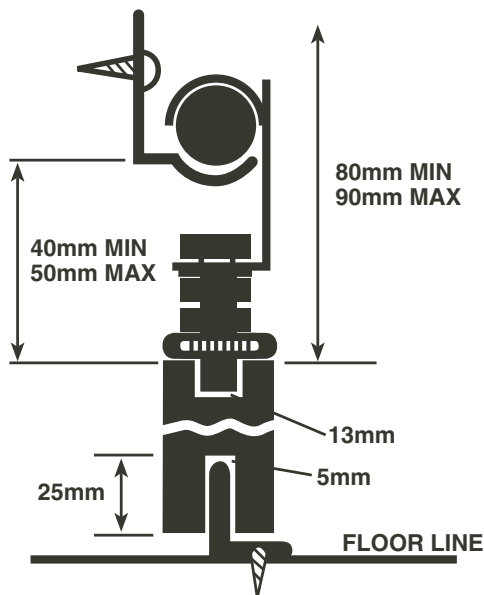
Adjust the clearance of the door from the wall by using lock nut under the carriage, and adjust the height by using serrated nut. Once in position, tighten both lock nuts.

Step 9

Fix the door guide beside opening jamb.

Step 10

Place the track stops at desired position along the track and tighten.



Economy Sliding Door track with Nylon Wheels (30kg)

• REFER PAGE 8

To suit door width 600-920mm. (30kg weight capacity)

Step 1

Fit headboard (88mm wide x 19mm thick) along wall to where door is sliding. Bottom edge of headboard should be flush with bottom edge of wall, above the opening.

Step 2

Draw horizontal line along headboard 20mm above actual height of door resting on floor. Place bottom back edge of track on marked line and screw in position using medium screws.

Step 3

Groove the bottom of the door 25mm deep and 5mm wide.

Step 4

Fit trolleys with large screws 50mm in from each end of door, if door width is 870mm or less.

If door width is close to 920mm, fit trolleys 200mm in from each end. Trolleys should be flush with inside face of door as illustrated.

Step 5

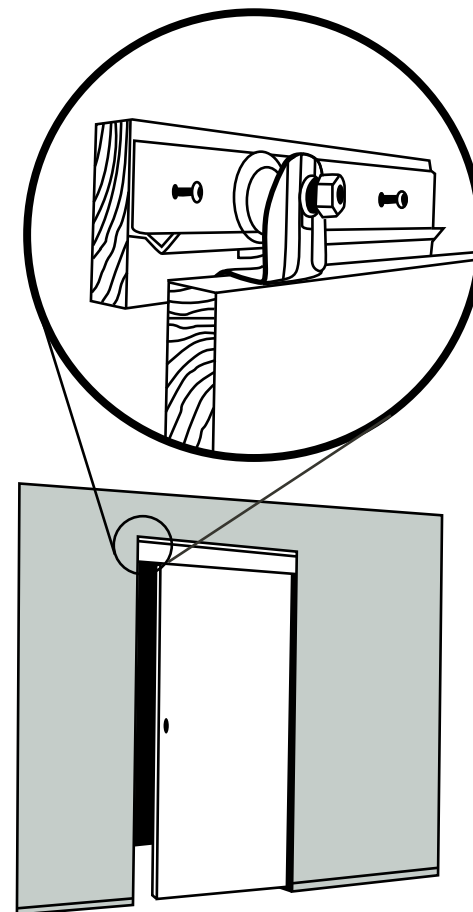
To hang the door, tilt or slide in from end of track.

Step 6

Fix the door guide beside opening jamb.

Step 7

Place the track stops at desired position along the track and tighten.



- **REFER PAGE 9**

- Widely used in lighter commercial and industrial applications.
- To cover any width of opening any number of doors can be used.
- To accommodate different building designs, doors can slide to one or both sides.
- Hinged door for easy access may be incorporated into a sliding door.
- Where doors are fitted externally, a canopy is recommended.

Track System: Single Run 120

Max door height 3000mm

Max door weight	120kg
-----------------	-------

Door thickness 19-48mm

- For ease of operation it is recommended that the door width should not exceed 75% of door height.
- Timber doors for interior use can be flush construction or glazed.
- Timber doors for industrial applications should be framed, ledged and braced.
- Metal door should be constructed of box section, channel or angel framing, well braced and clad with flat or corrugated sheets.

Sets compromise, top track, hangers, door stops, nylon guide, screws and instructions.

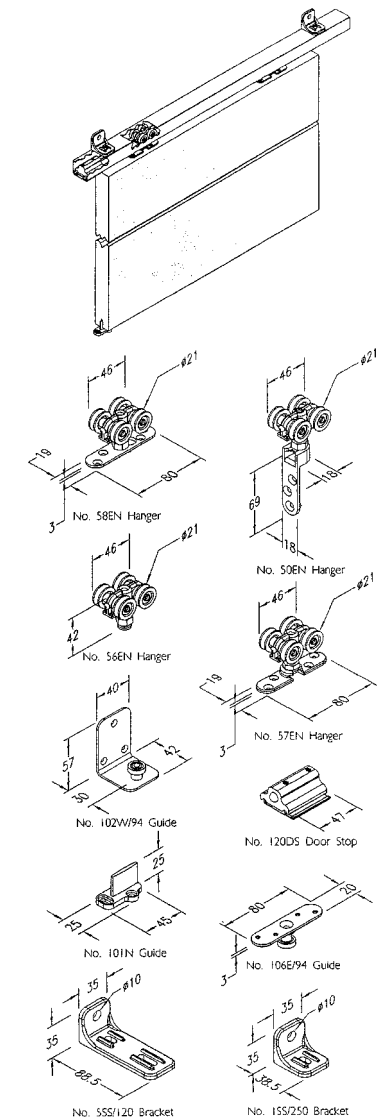
Material: Aluminium

Aluminium track available in mill or clear anodised.

All hanger suffixed 'N' have nylon tyre wheels and are fitted with ball race bearings.

Nylon tyre wheel hangers should not be used on installations involving temperatures exceeding 80° C.

Bow handles, Flush Pulls, Surface Bolts, Flush Bolts, Doors Stops.



32 Fixing information

Husky 75 Sliding Door track (75kg)

• REFER PAGE 9

FACE OF WALL FIX

Step 1

Draw horizontal line 75mm above door opening head. Fix top back edge of track to drawn line.

Step 2

Groove the bottom of the door 25mm x 5mm for door guide.

Step 3

Fix hanger plate to top of door 100mm in from each end. (Centre hanger).

Step 4

Lock in 4 wheel trolley to hanger plate.

Step 5

Adjust for height then tighten lock nuts.

Step 6

Place door stops in track at desired position and tighten.

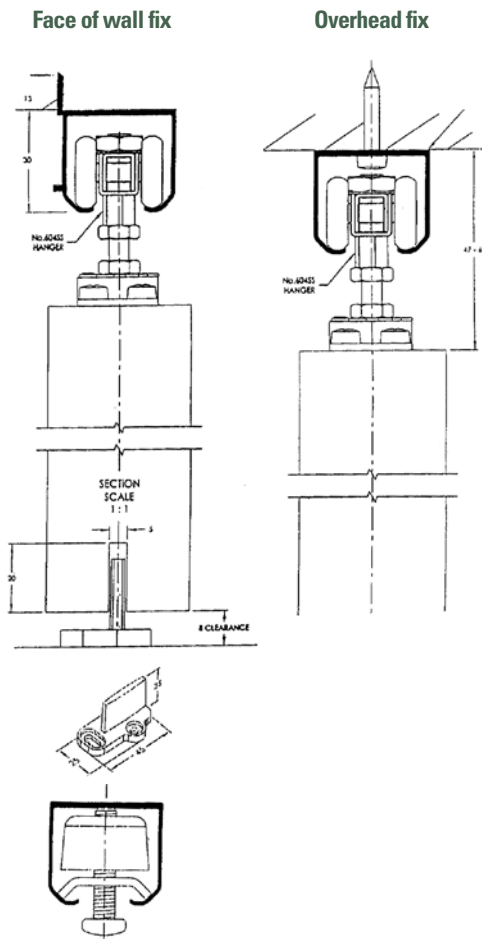
OVERHEAD FIX

Step 1

Allow 55mm (min. 47 - max. 63mm) for track and fittings.

Step 2

Follow instruction as from Face of Wall fixing. (Item 2).



Robetrack for By-Passing Doors (track & fittings)

• REFER PAGE 11

Step 1

Cut track to desired length of opening and screw loosely to overhead section. This ensures wheels will not be damaged when hanging doors.

Step 2

Height of door should be 45mm less than the height of the finished opening.

Step 3

Fit wheels 70mm in from each end of the door.

Step 4

Groove the bottom of the door 25mm deep and 5mm wide.

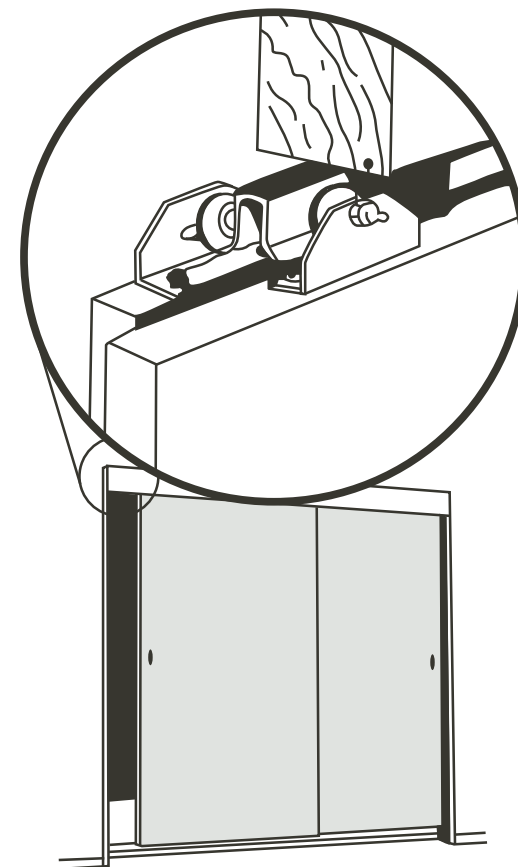
Step 5

Hang the rear doors first, before hanging the front doors. After hanging all doors, track must be screwed tight to overhead section.

Step 6

Fix the door guides to floor where necessary.

• Fittings provided suit 2 door opening. To hang extra doors, fittings can be purchased separately (no. 330)



Robesaver Wardrobe Unit (50kg max)

• REFER PAGE 12-14

Fixing instructions

Step 1

Door height should be 30mm less than the actual floor to overhead fixing board.

Step 2

Place top rail parallel to overhead structure and flush with architrave.

Step 3

Fix bottom rail to floor plumb with top rail. If floor is uneven, attach bottom rail to a timber length same as opening (ensure timber is 90mm width x 19mm thickness).

Step 4

Rebate carriages to bottom of door.

See either A or B (As illustrated below)

Step 5

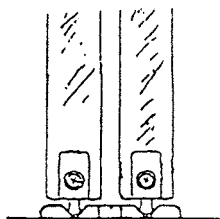
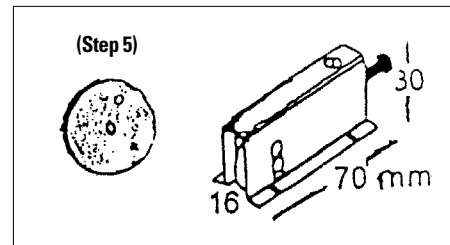
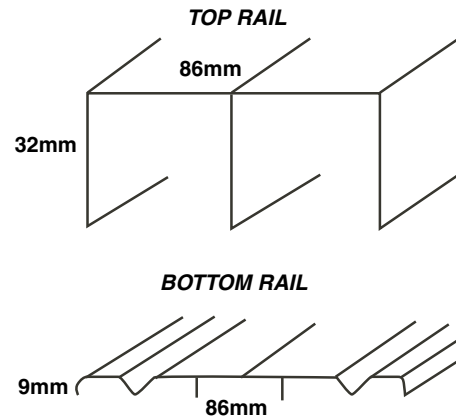
Fit plastic discs to top of door 100mm in from ends.

Step 6

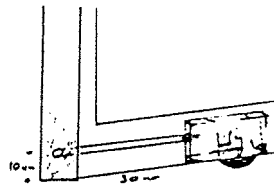
Fit rear door first by lifting into top rail and placing bottom of door in 'V' section of bottom track.

Step 7

For height adjustment, turn screw on end of carriage, using 'Phillip head' screw driver.

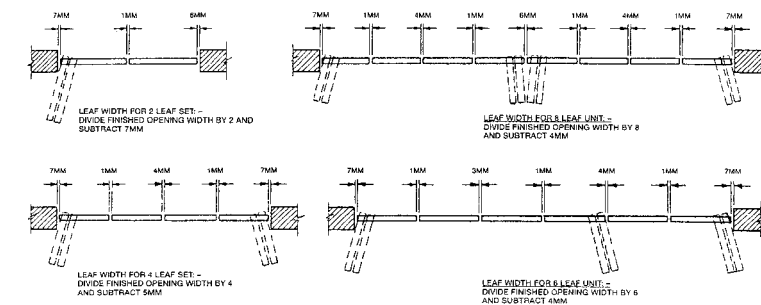
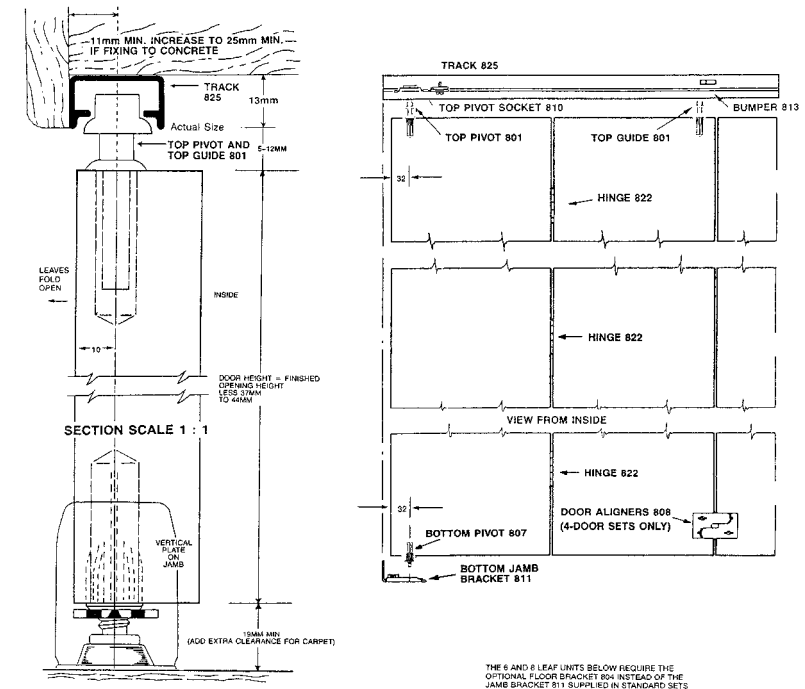


A) Draw a line 72mm from both ends of the bottom and centre of the door. Create a 16mm rebate (Using a 16mm drill bit) along the line to a depth of 32mm and trim with a chisel to allow the carriage to fit.



B) Fit carriage 30mm in from bottom ends of door. To do this you will need to create a rebate for carriage similar to option A. To adjust carriage height drill a 6mm hole into side of door, 10mm from the bottom of door.

Johnson Bi-Fold (16kg max) • REFER PAGE 16



Acme Bi-Fold Track & fittings

• REFER PAGE 17

Step 1

Door height - Make doors 38mm less than net opening height
Door width - Subtract the following from net opening width and divide by number of doors:

Door Size	Trim Size	2 Dr. opening folds to 1 side	4 Dr. opening fold to 2 sides
25mm - 35mm	19mm	19mm	32mm
25mm - 35mm	13mm	13mm	19mm
25mm	no trim	6mm	13mm
35mm	no trim	10mm	16mm

eg. 762mm less 19mm = 743 - 2 = 372mm each door.

eg. 1542mm less 32mm = 1492mm - 4 = 373mm each door.

Step 2

Install non-mortise hinges to edge of doors 25mm or more in thickness (The leaf position on doors is optional). Spacing between doors in folded position will be 8mm or diameter of the hinge barrel.

Step 3

Drill holes for pivots and guides using an 11mm dia twist drill or high speed wood bit. Make holes 38mm (min) deep, 32mm from edge of door.

Step 4

Cut the track to fit the opening and locate 22mm from front edge of head lining. Do not fit the top track until Step 8.

Step 5

Attach bottom jamb bracket so centre line of pivot slot is plumb with centre line of track. Bottom leg should rest firmly on carpet of floor. (Hole is provided for mounting to floor if desired).

Step 6

Attached No. 2026 aligner (four door installations only) to back of lead doors, approximately 300mm from floor so that they interlock. Note: Surface aligners may be left off doors if installation is precise and doors close properly true with each other. (Particularly in "between rooms" application).

Step 7

Locate the bottom and top pivot pins supplied (top pivot is spring loaded). To install hinged pair of doors, fold and stand up. Place top pivot pin (C) in top brackets hole. Lift doors and drop bottom pivot pin into bottom bracket slot.

Step 8

Locate slide/glide in track clipping into place with thumb. Using other hand depress pin on lead door and swing door into position under guide. Release pin into space (D) between two springs.

Step 9

Horizontal adjustment. Two door set - With both doors in closed position adjust top pivot block using surface aligner supplied and/or bottom pivot by raising the doors, repositioning and lowering doors to ensure that the top of the doors is parallel to track and the doors are placed centrally in doorway opening. Four door set - Position first two doors as for Two Door Set and ensure door nearest jamb does not bind when operated. Position second pair of doors similarly ensuring that meeting edges of the two pairs of doors are parallel. It may now be necessary to readjust all four pivot locations to ensure full door fits centrally in doorway opening.

Step 10

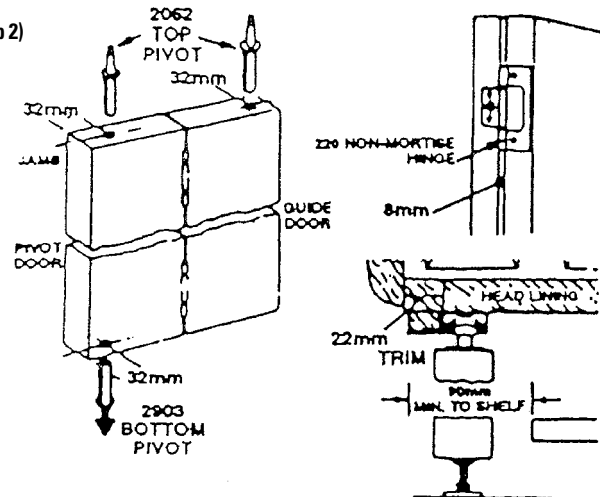
Vertical adjustment: Raise the doors so the bottom pivot pin clears the slot and then extend the pin by turning clockwise. Test for height and repeat if necessary.

Step 11

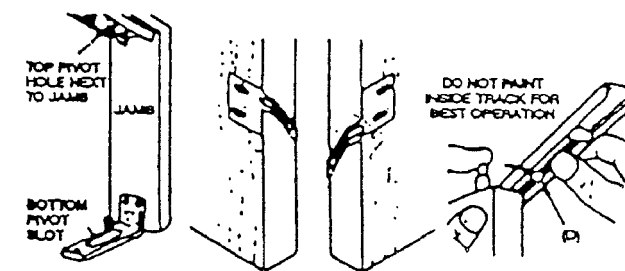
(A) Fit 20mm x 16mm top trim against the track as illustrated in Step 1 (Fit on the flat) (b) Fit 20mm x 16mm side trim (fit on edge). (c) Fit knobs of your own choice or the drop pulls provided in the position shown on main illustration.

• **Note Door height allowance less 38mm than the finished opening height. Door width allowance (Door 25mm thick). Two doors to one way. Less 3mm each door).**

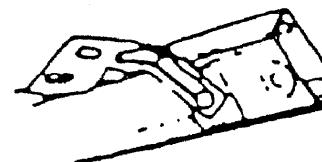
(Step 2)



(Step 7)



(Step 9)



Johnson Multi-Fold (25kg)

• REFER PAGE 18

For top hung interior folding partitions, Max 25kg each leaf.

Application

- Suitable for residential and light commercial folding partitions.
- Leaves can be either end folding or centre folding.
- Leaves can fold to one or both sides of the opening.
- Pivot hardware enables an end folding internal partition to be designed using standard width door leaves with no need to reduce the width of the leaf adjacent to the jamb.

Door Specification

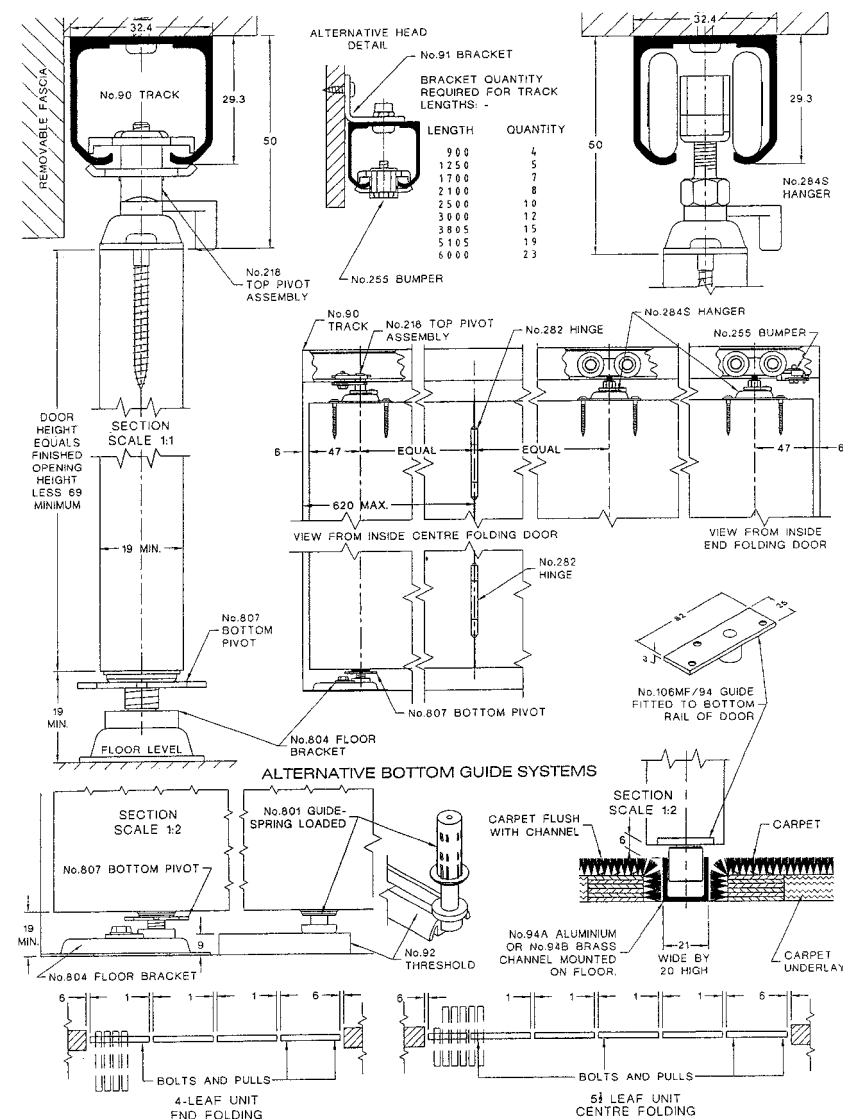
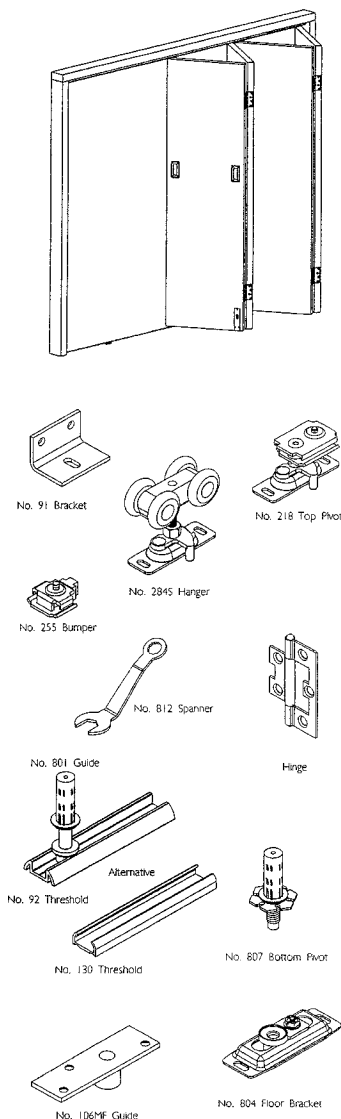
Track system:	Multi-fold 25
For individual Leaves:	
Max Leaf height	2400mm
Max Leaf weight	25kg
Max Leaf width	620mm
Min Leaf thickness	19mm

Application

- The folding unit is not hinged to a jamb, but is pivoted in the track and on the adjustable jamb bracket.
- End folding units of two, four, six or eight leaves can be pivoted to each side of the opening.
- Centre folding units of one, three, five or seven full width leaves and on "half" width leaf can be pivoted to each side of the opening.
- A guide system across the floor must be used on end folding units of four leaves or more in excess of 450mm wide or 15kg per leaf.
- Instructions on leaf width calculation is shown in illustration to the right. Door leaves should be constructed to provide secure fitting for the pivots, hanger, hinges and guides and can be either flush, panelled or of louvre construction.

Standard fitting pack and sets

Contains: MF2-B - Basic two leaf pack includes - one of each top pivot assembly, bottom pivot, jamb bracket, hanger, bumper and spanner, plus three hinges, all screws and fitting instructions. MF2-A - Add-on two leaf pack includes - one hanger, six hinges and all screws. For each folding unit, select one MF2-B basic pack, sufficient MF2-A add-on fitting packs and a suitable length of 90 track to cover the width of the opening.

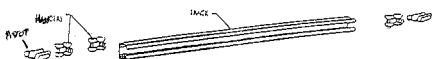


25kg Light Accordion Door Track (Room Divider)

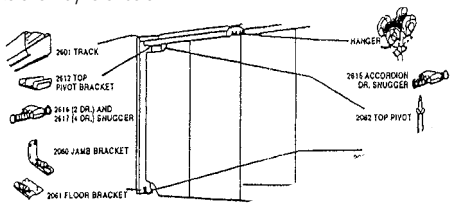
• REFER PAGE 20

Step 1

Fitting the track - Cut the track to fit the opening width between the jambs. Insert all the hardware required for your application into the track. Example shown below is for four leaves folding to the left and two leaves to the right.



Note: Door height allowance less 62mm than the finished opening height. Door width allowance (Door 25mm thick). Two doors to one way. Less 3mm each door. Three doors and more to one way refer below:



FOR 2 OR 4 DOOR INSTALLATIONS.

Step 1

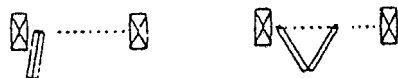
Door height - make 62mm less than finished opening height. (Allow added clearance for carpeting thickness).

Step 2

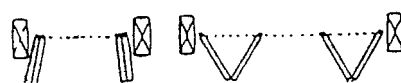
Door width - subtract the following from net opening width and divide by number of doors:

Door Size	Trim Size	Tw Dr. opening folds to 1 side	4 Dr. opening fold to 2 sides
25mm - 35mm	19mm	19mm	32mm
25mm - 35mm	10mm	13mm	19mm
25mm	without	6mm	13mm
35mm	without	10mm	16mm

TWO DOOR INSTALLATION

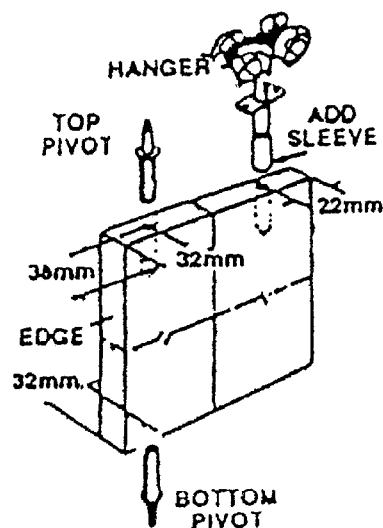


FOUR DOOR INSTALLATION



Step 3

Drill holes 11mm dia x 38mm (min.) deep, the distance from edge of doors shown. (a) Tap top and bottom pivots into holes with light hammer blows. (b) Screw hanger T-nut in position and turn hanger into T-nut as far as possible. (Crimp in T-nut acts as lock nut.)



FOR ACCORDION DOOR INSTALLATIONS (UP TO 25KG EACH (MORE THAN 2 DOORS TO A JAMB))

Step 1

Door height - make 62mm less than finished opening height. (Allow added clearance for carpeting thickness)

Step 2

Door width - (Edge hung to one jamb). Any EVEN number of same size doors may be used, providing hangers are placed on every other door.

Step 3

Drill pivot and T-nut holes same as step 3 left hand column, except that all holes should be 32mm from door edge in accordion installations (more than 2 doors to a jamb).

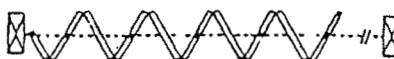
*From net opening width subtract the total of 10mm for first pair of doors plus 2mm for each additional pair of doors. Then divide by total number of doors.



Eg. 10 doors in 3048mm net opening - 10mm plus 8mm (2mm x 4pr.) = 18mm. 3048 - 18mm = 3030mm - 10mm or 303mm each door.

EDGE HUNG TO BOTH JAMBS. Figure (as above) to each jamb separately using one half OVERALL net opening width.

CENTRE HUNG TO ONE JAMB. One HALF door required with ANY number of full size doors, providing hangers are placed on every other door starting at lead or centre door.



eg: 9 1/2 doors in 3048mm net opening.

(1) FOR FULL SIZE DOORS. From net opening width subtract total of 42mm for first pair plus 2mm for each additional pair, then divide by total number of doors.
42mm plus 8mm (2mm x 4pr.) = 50mm, 3048 - 50 = 2998mm - 9 1/2 or 316mm each full door.

(2) FOR HALF DOOR take half of full door plus 32mm 316 + 2 = 158mm + 32mm = 190mm
CENTRE HUNG TO BOTH JAMBS. Figure to each jamb separately using one half overall net opening width.

INSTALLATION INSTRUCTIONS USING 4-WHEEL HANGER SYSTEM

Step 1

Opening to be square and plumb.

Step 2

Cut track to length of opening. Before fixing to beam place required number of hangers & top pivot block in track. Screw jamb bracket at floor level.

Step 3

Pre drill all doors for hinges. Top pivot pin, bottom pivot pin, 11mm "T" nut (9mm). Tap pivot pins in holes & screws "T" nut in place.

Step 4

Screw hinges to door 1 & 2. Stand doors upright & screw hanger bolt to "T" nut. Screw in as far as possible. Lift pivot door into top pivot block. Place bottom pivot in jamb bracket, adjust & tighten.

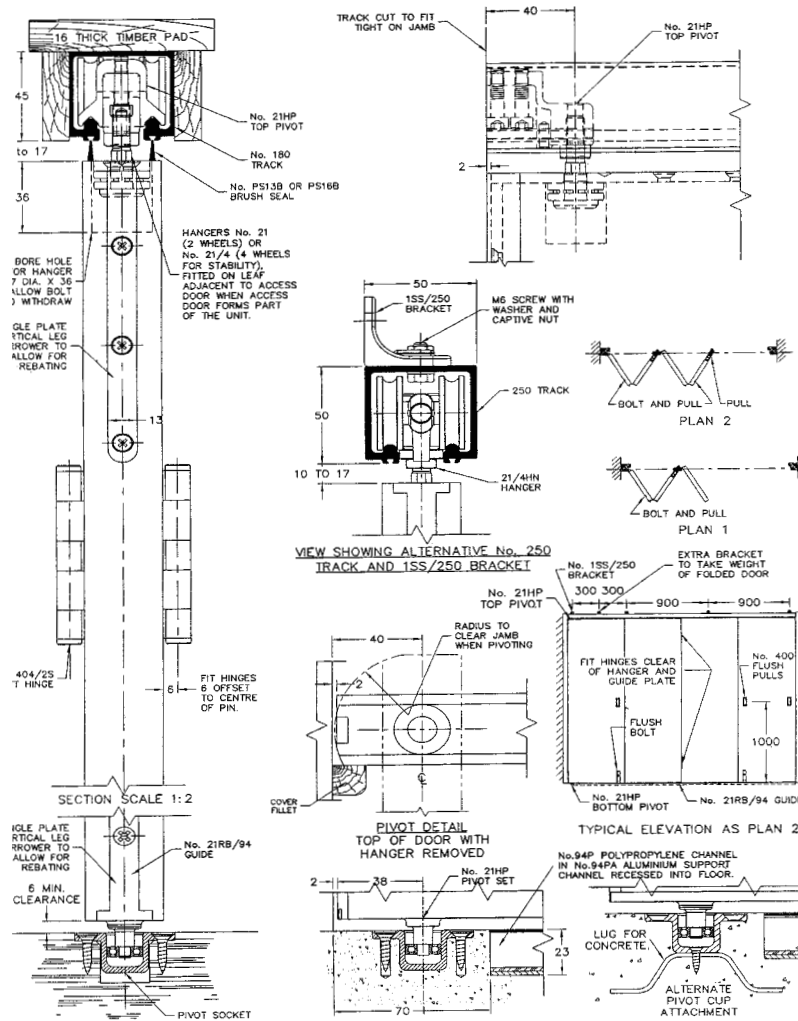
Step 5

Align doors with track by adjusting hanger. Make sure hanger bears weight of door.

Extra Doors

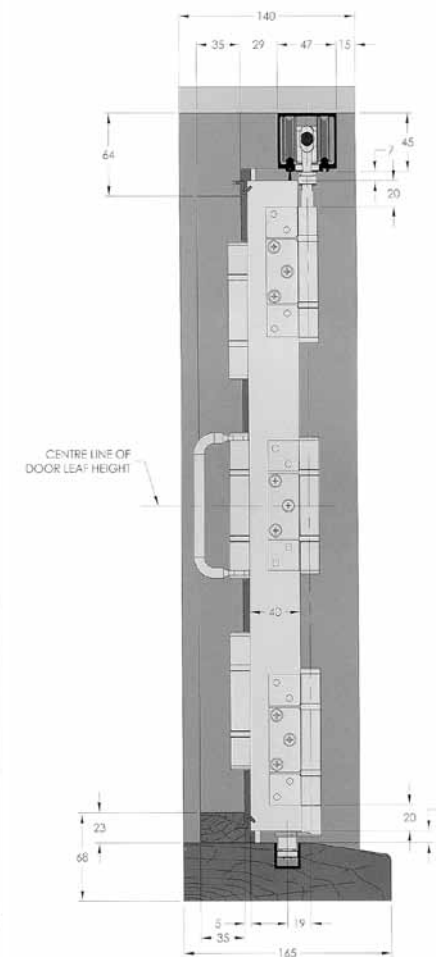
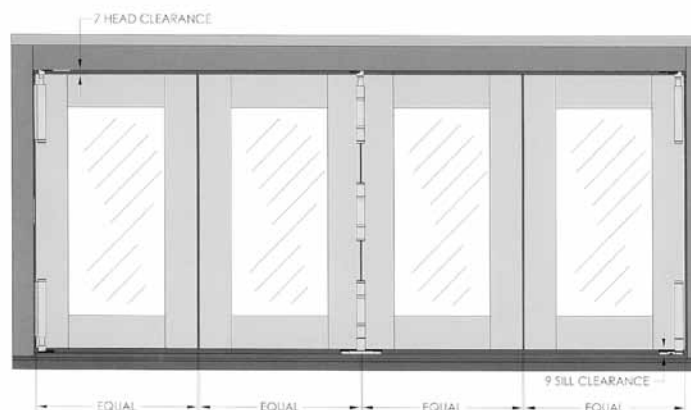
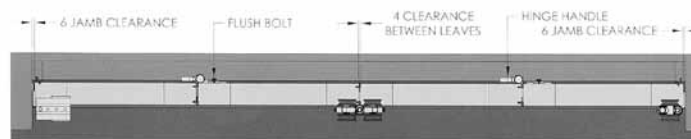
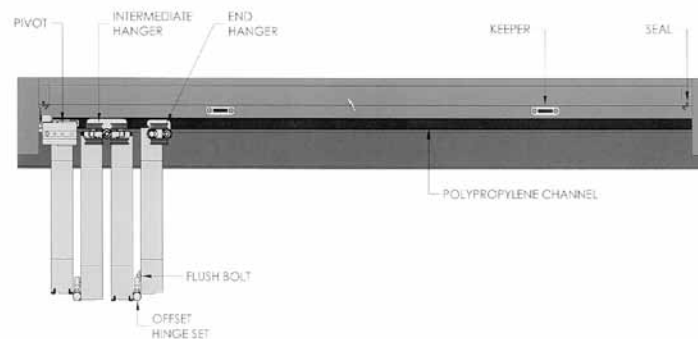
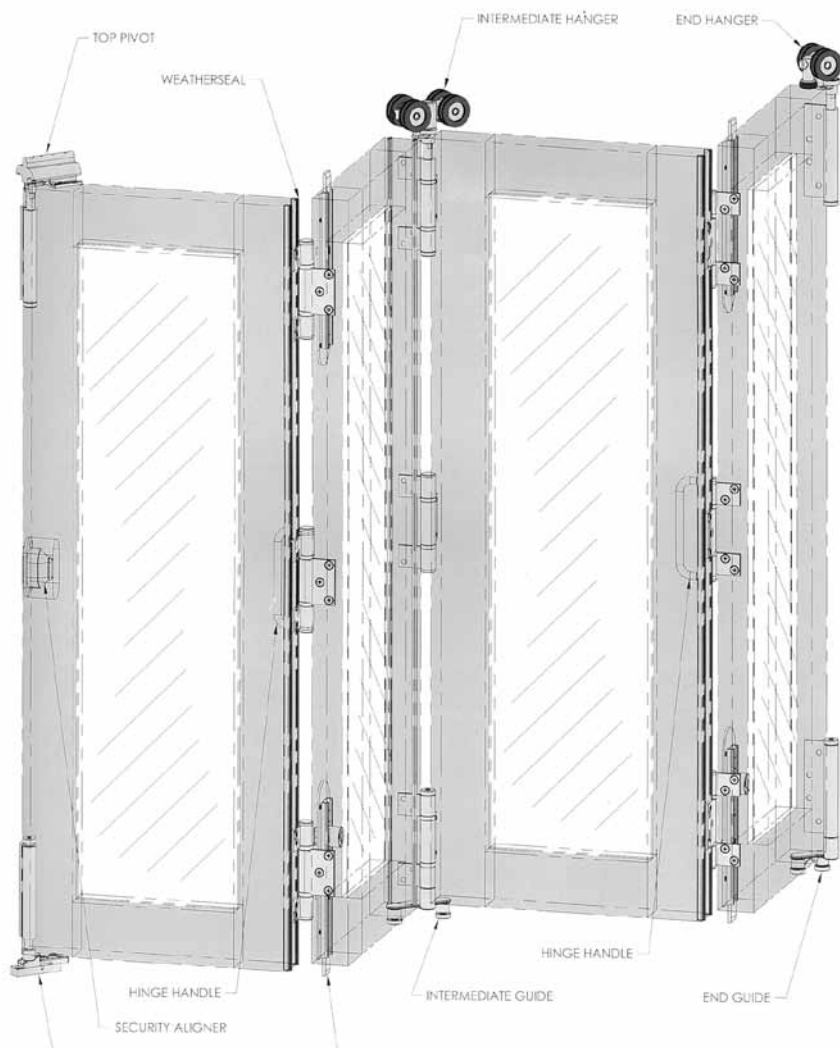
For every pair of doors to same side attach hinges to doors 3 & 4. Then screw hanger into "T" nut to same depth as door 2. Align door 3 with door 2 & attach hinges to pre drilled holes. Remember all hangers must bear weight.

75 kg Pivot Fold • REFER PAGE 20



38 Fixing information

Weatherfold 45kg & 75kg Exterior Folding Timber Doors • POA



> p. 03 9558 2555 > e. ActiveHardware@netspace.net.au
 > f. 03 9558 7111 > w. www.activehardware.com.au

Notes:

Terms & Conditions

Delivery on over sized lengths:

*Lengths over 4 metres will incur a \$25 delivery fee for metro areas and \$50 for country areas or arrange the goods to be picked up at Active Hardware by your nominated carrier to eliminate the charge.

Payments & Prices

- Prices are per each unless stated.
- All payments are strictly net 30 days end of month.
- Good shall remain the property of Active Hardware Products until full payment is received.
- No claims recognised unless made with 7 days.
- Prices exclude GST.

Minimum invoice

Active Hardware has a minimum invoice of \$200.00 per order. Orders under the minimum order attract a \$10 surcharge.

Credits

All credit claims will only be accepted within 7 days if goods are faulty or supplied contrary to the order placed.

Important notice:

*Lengths over 4 metres will incur a \$25 delivery fee for metro areas and \$50 for country areas or arrange the goods to be picked up at Active Hardware by your nominated carrier to eliminate the charge.

The image features a dark, textured background with a repeating pattern of the words "Active Hardware" in a light gray, italicized font. The text is arranged in horizontal rows, creating a sense of depth and movement. In the bottom right corner, the "Active Hardware Products" logo is prominently displayed in white. The logo consists of the word "Active" in a large, bold, sans-serif font, with "Hardware Products" in a smaller, regular font below it. To the left of the logo, contact information is provided in a small, white, sans-serif font: "> p. 03 9558 2555 > e. ActiveHardware@netspace.net.au > f. 03 9558 7111 > www.activehardware.com.au".